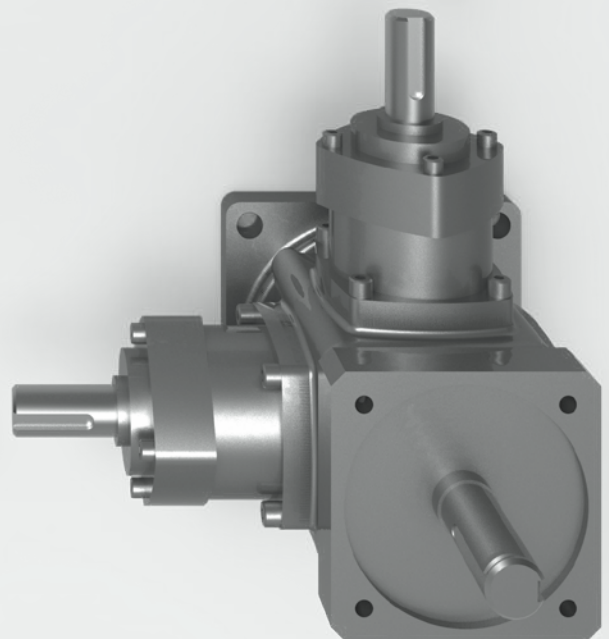
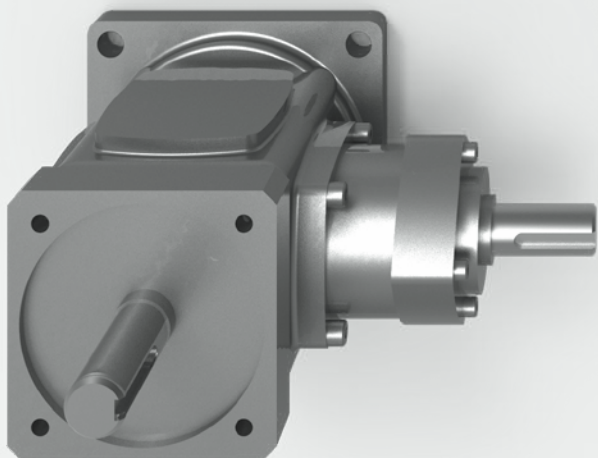
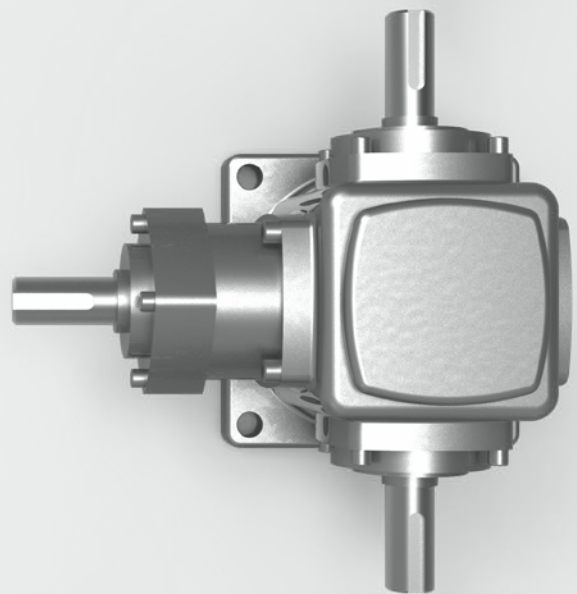


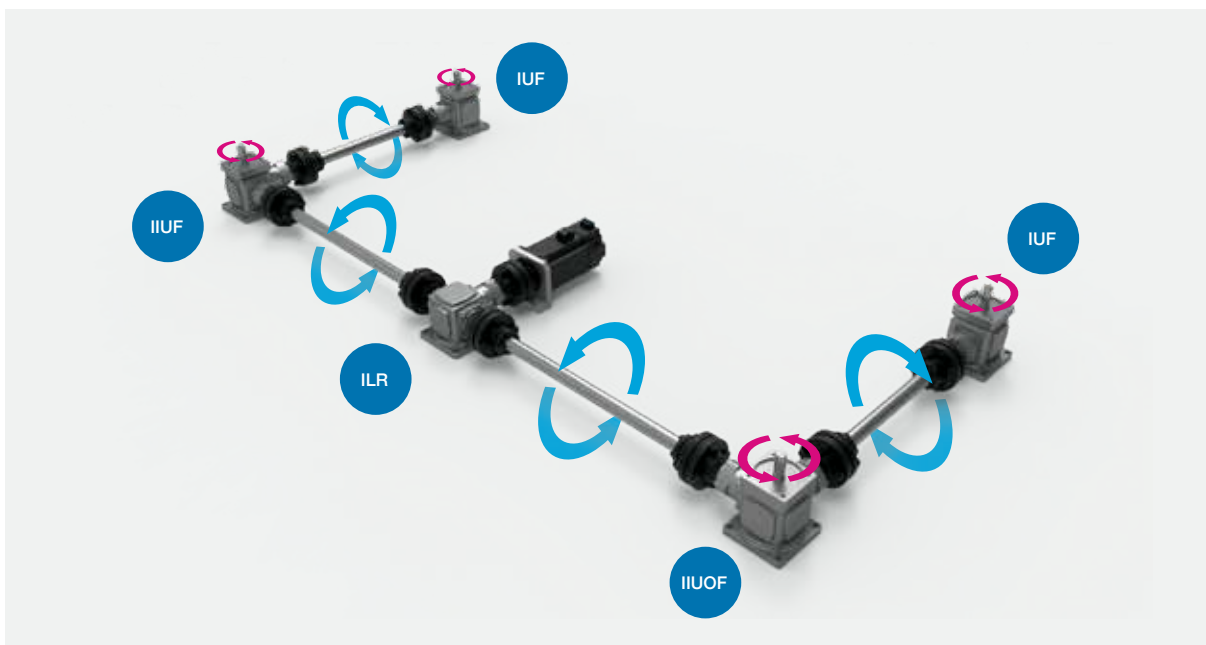
十字轉向器

BEVEL GEARBOX



十字轉向器

BEVEL GEARBOX



- 日規電缸滑台
JP linear actuator
- 歐規電缸滑台
EU linear actuator
- 超長型電缸滑台
Super length linear actuator
- 活塞杆電動缸
Cylinder actuator
- 旋轉台
Rotary stage
- 精密對位平台
Precision alignment stage
- 減速機
Gear reducer
- 十字轉向器
Bevel gearbox

AIMLG 2M - B2 - I - I - LR - O - F

十字轉向器 缸徑 速比 第一入力軸 第二入力軸 出力軸 轉向 法蘭盤
Bevel Gearbox Size (mm) Transmission Ratio First Input Shaft First Input Shaft Output Shaft Direction Steering Direction Flange Plate

2M	1:1	D 直接安裝 Direct	L 左出軸 Output Left	LR 雙出軸 Dual Output	O 逆時針 Counterclockwise	無 None
4M	B2 2:1	4M 轉向器 Bevel Gearbox	R 右出軸 Output Right	UH 上出軸 Hollow Shaft Up	R 順時針 Clockwise	F 上法蘭 Upper Flange
			U 上出軸 Output Up			M 馬達法蘭 Motor Flange
						FM 雙法蘭 Dual Flange

● 有選項 Optional ● 無選項 No options

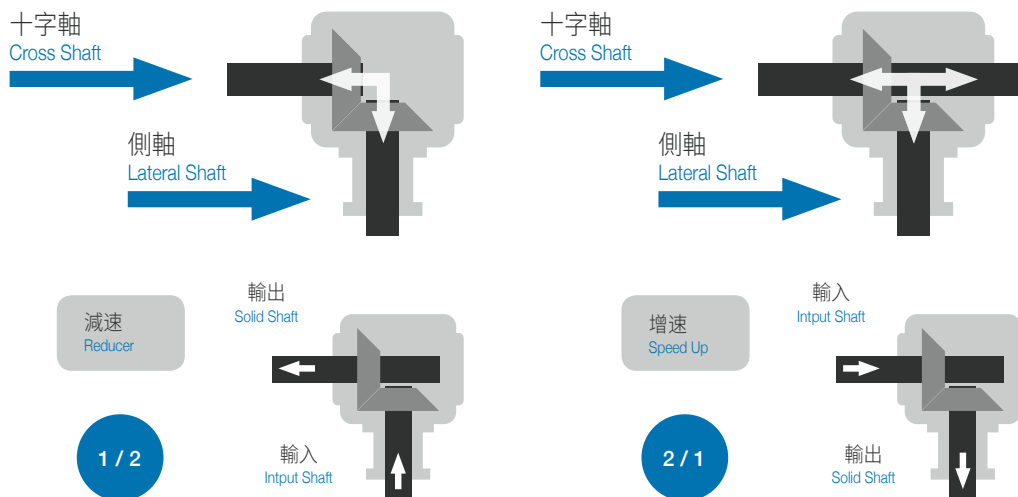
	入力軸 Force Axis	LG2M		入力軸 Force Axis	LG4M	
	回轉速度 Steering Speed (r/min)	入力 Input Shaft (KW)	出力軸扭矩 Output Shaft Torque (N.m)	回轉速度 Steering Speed (r/min)	入力 Input Shaft (KW)	出力軸扭矩 Output Shaft Torque (N.m)
減速比 Reducer Ratio 1 : 1	3000	0.1	0.27	3000	0.75	2.04
	3000	0.2	0.54	2000	1	4.05
	3000	0.4	1.11	2000	1.5	6.09
	3000	0.75	2.04	2000	2	8.12
	2000	1	4.05	2000	3	12.17
	2000	1.5	6.09			

	入力軸 Force Axis	LG2MB2		入力軸 Force Axis	LG4MB2	
	回轉速度 Steering Speed (r/min)	入力 Input Shaft (KW)	出力軸扭矩 Output Shaft Torque (N.m)	回轉速度 Steering Speed (r/min)	入力 Input Shaft (KW)	出力軸扭矩 Output Shaft Torque (N.m)
減速比 Reducer Ratio 2 : 1	3000	0.1	0.54	3000	0.75	4.08
	3000	0.2	1.09	2000	1	8.11
	3000	0.4	2.21	2000	1.5	12.17
	3000	0.75	4.08	2000	2	16.24
	2000	1	8.11	2000	3	24.34
	2000	1.5	12.17			

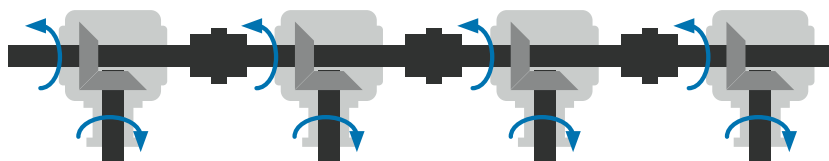
以上負載力矩曲線，客戶選用之負載帶在我司產品最大負載範圍內 Above load torque curve, the loading should be within the maximum load range

十字轉向器 BEVEL GEARBOX

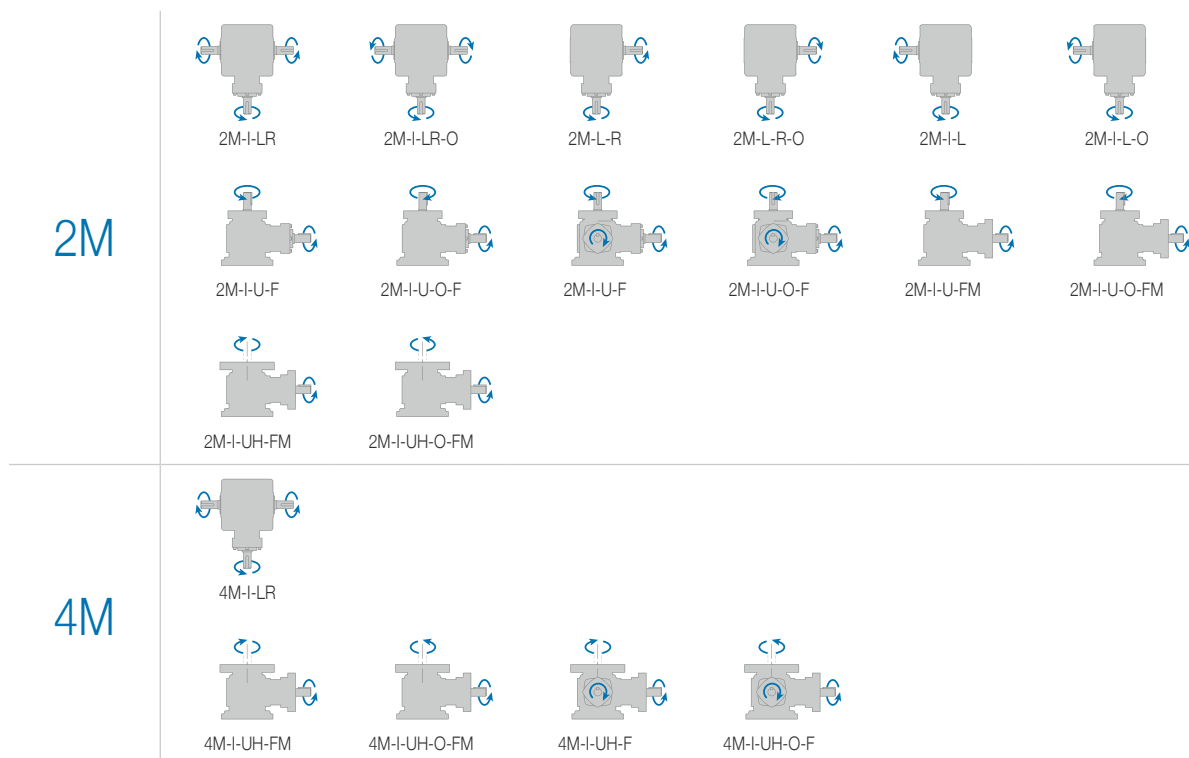
轉向機基本轉動方式 Basic Type of Milter Gearbox Transmission



轉向機應用案例 Example of Applications for Milter Gearbox



軸配置旋轉關係 Shaft Configuration



標準規格形式
Standard Model Type



2M-I-LR / 2M-I-LR-O



2M-I-R / 2M-I-R-O



2M-I-L / 2M-I-L-O



2M-I-U-F / 2M-I-U-F-O



2M-I-U-FM / 2M-I-U-FM-O



2M-I-I-U-F / 2M-I-I-U-F-O



2M-I-UH-FM / 2M-I-UH-FM-O



4M-I-LR / 4M-I-LR-O



4M-I-UH-FM / 4M-I-UH-FM-O

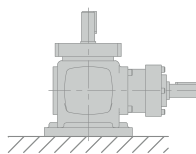
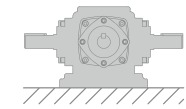


4M-I-I-UH-F / 4M-I-I-UH-F-O

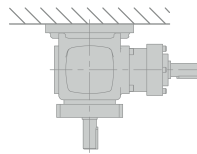
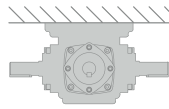
日規電缸滑台 JP linear actuator
歐規電缸滑台 EU linear actuator
超長型電缸滑台 Super length linear actuator
活塞杆電動缸 Cylinder actuator
旋轉台 Rotary stage
精密對位平台 Precision alignment stage
減速機 Gear reducer
十字轉向器 Bevel gearbox

安裝方式
Installed Method

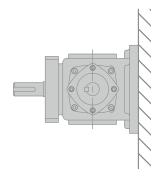
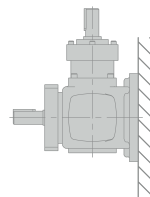
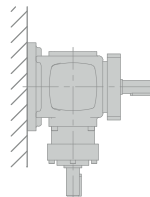
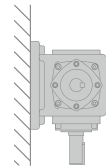
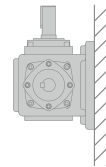
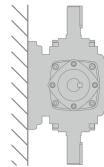
水平
Horizontal



吊掛式
Overhung

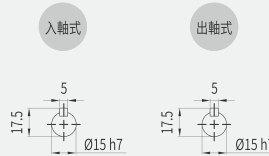
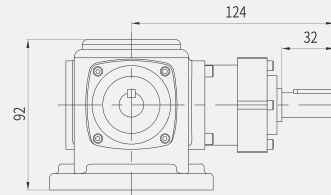
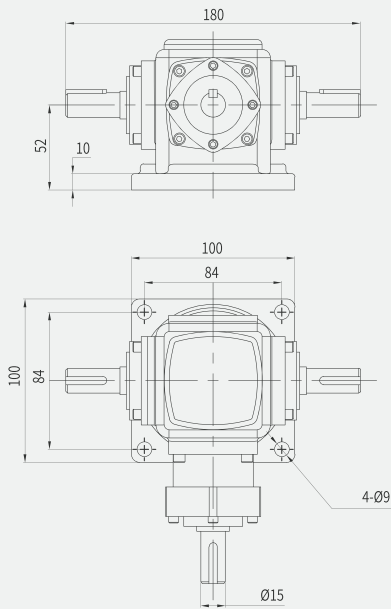


側掛式
Sidewall



AIMLG2M-I-LR / AIMLG2M-I-LR-O

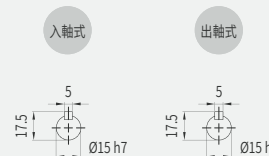
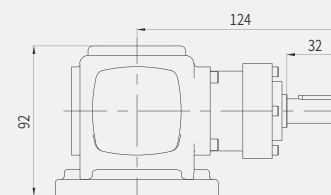
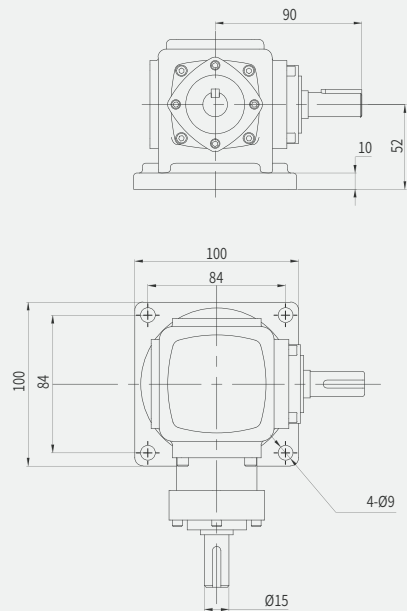
單位 Unit: mm



本圖面僅供參考用途，實際尺寸皆以實際提供之2D/3D圖紙為準 This drawing is for reference only. The actual dimensions are based on the actual 2D / 3D drawings provided.

AIMLG2M-I-R / AIMLG2M-I-R-O

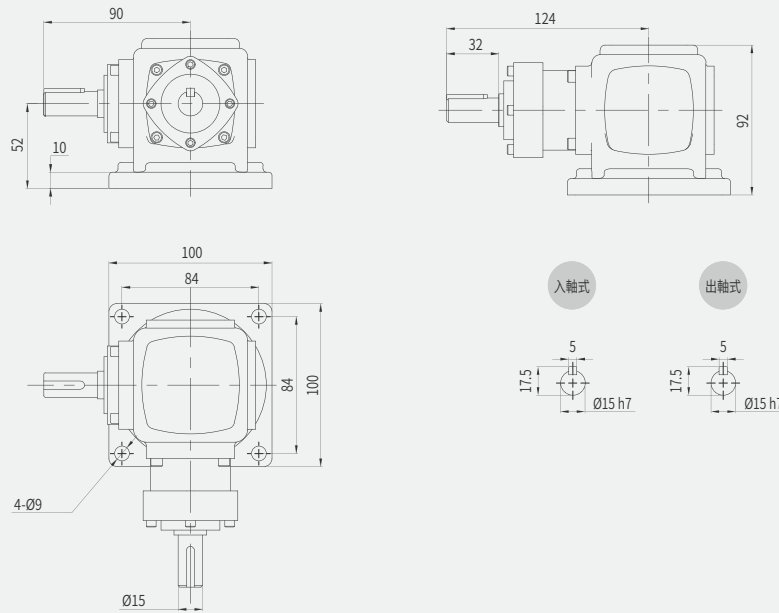
單位 Unit: mm



本圖面僅供參考用途，實際尺寸皆以實際提供之2D/3D圖紙為準 This drawing is for reference only. The actual dimensions are based on the actual 2D / 3D drawings provided.

AIMLG2M-I-L / AIMG2M-I-L-O

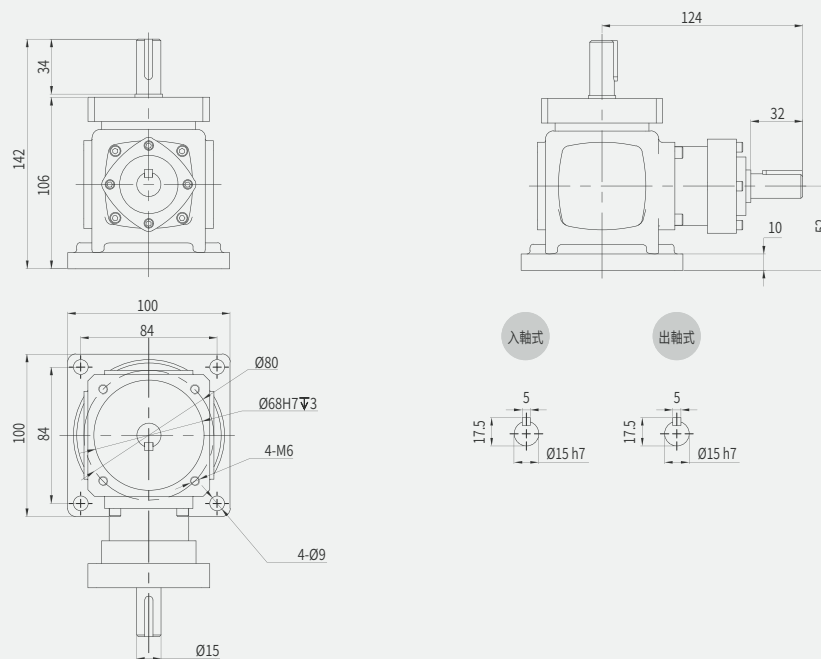
單位 Unit: mm



本圖面僅供參考用途，實際尺寸皆以實際提供之2D/3D圖紙為準 This drawing is for reference only. The actual dimensions are based on the actual 2D / 3D drawings provided.

AIMLG2M-I-U-F / AIMG2M-I-U-O-F

單位 Unit: mm

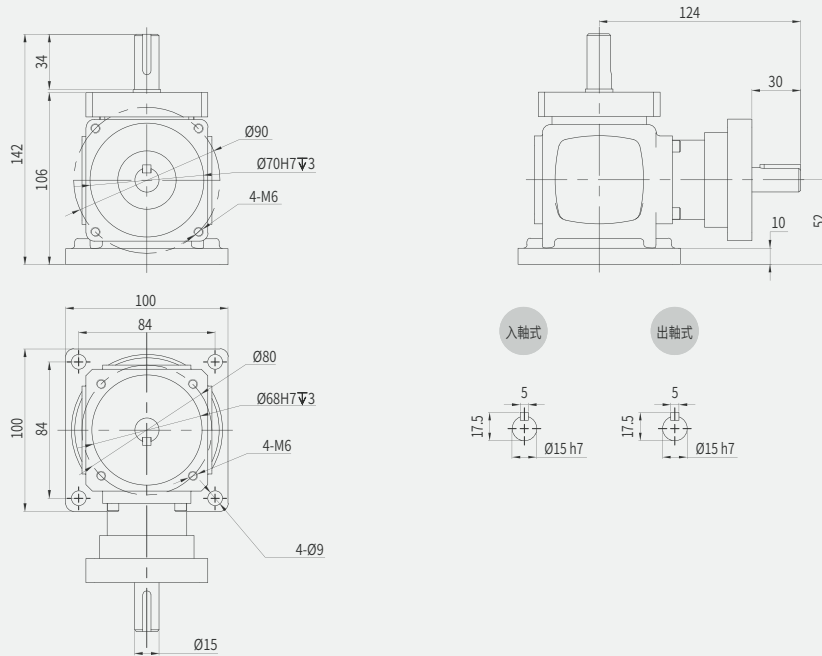


本圖面僅供參考用途，實際尺寸皆以實際提供之2D/3D圖紙為準 This drawing is for reference only. The actual dimensions are based on the actual 2D / 3D drawings provided.

- 日規電缸滑台
J linear actuator
- 歐規電缸滑台
EU linear actuator
- 超長型電缸滑台
Super length linear actuator
- 活塞杆電動缸
Cylinder actuator
- 旋轉台
Rotary stage
- 精密對位平台
Precision alignment stage
- 減速機
Gear reducer
- 十字轉向器
Bevel gearbox

AIMLG2M-I-U-FM / AIMLG2M-I-U-O-FM

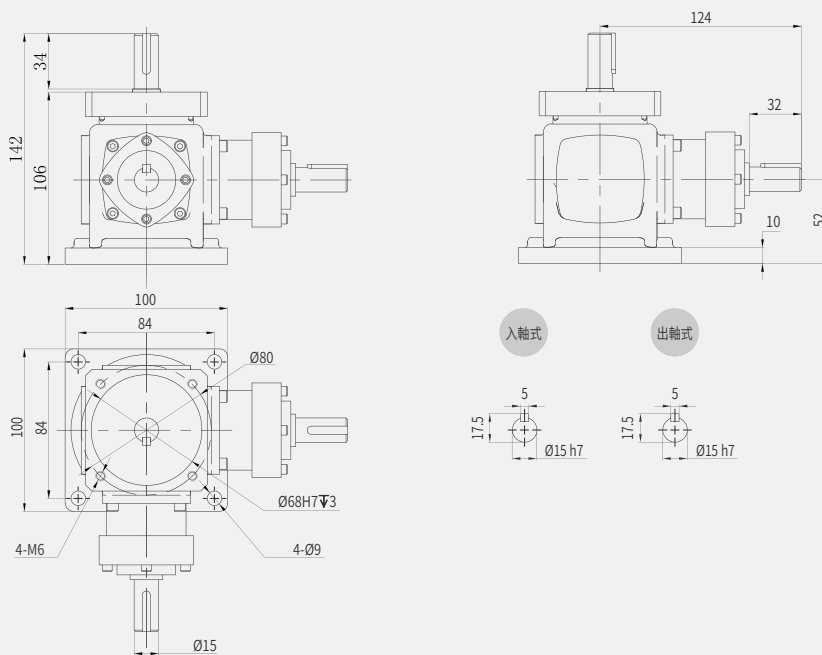
單位 Unit: mm



本圖面僅供參考用途，實際尺寸皆以實際提供之2D/3D圖紙為準 This drawing is for reference only. The actual dimensions are based on the actual 2D / 3D drawings provided.

AIMLG2M-I-I-U-F / AIMLG2M-I-I-U-O-F

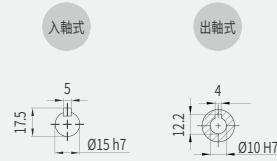
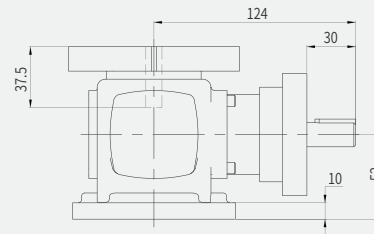
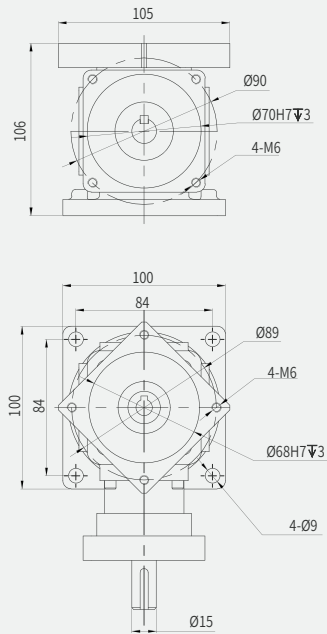
單位 Unit: mm



本圖面僅供參考用途，實際尺寸皆以實際提供之2D/3D圖紙為準 This drawing is for reference only. The actual dimensions are based on the actual 2D / 3D drawings provided.

AIMLG2M-I-UH-FM / AIMG2M-I-UH-O-FM

單位 Unit: mm

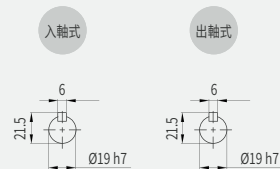
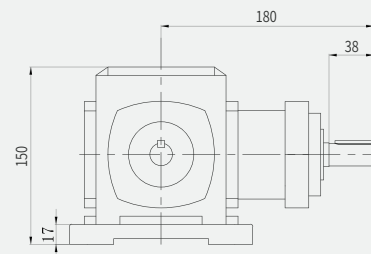
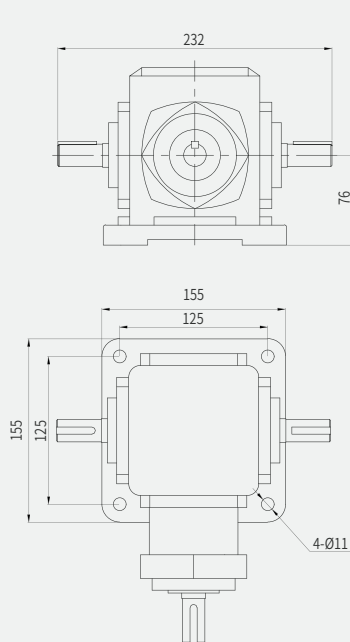


本圖面僅供參考用途，實際尺寸皆以實際提供之2D/3D圖紙為準 This drawing is for reference only. The actual dimensions are based on the actual 2D / 3D drawings provided.

- 日規電缸滑台
Linear actuator
- 歐規電缸滑台
EU linear actuator
- 超長型電缸滑台
Super length linear actuator
- 活塞杆電動缸
Cylinder actuator
- 旋轉台
Rotary stage
- 精密對位平台
Precision alignment stage
- 減速機
Gear reducer
- 十字轉向器
Bevel gearbox

AIMLG4M-I-LR / AIMG4M-I-LR-O

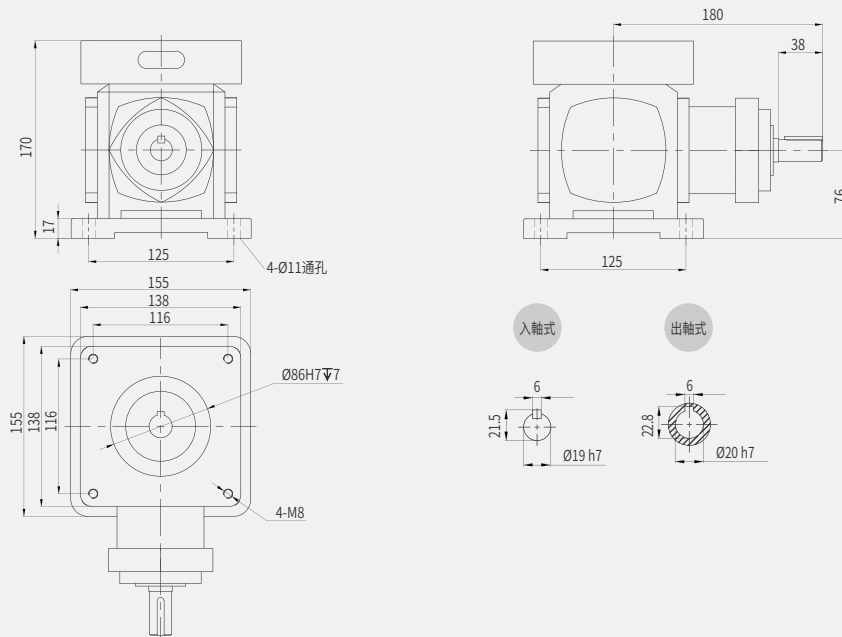
單位 Unit: mm



本圖面僅供參考用途，實際尺寸皆以實際提供之2D/3D圖紙為準 This drawing is for reference only. The actual dimensions are based on the actual 2D / 3D drawings provided.

AIMLG4M-I-UH-F / AIMLG4M-I-UH-O-F

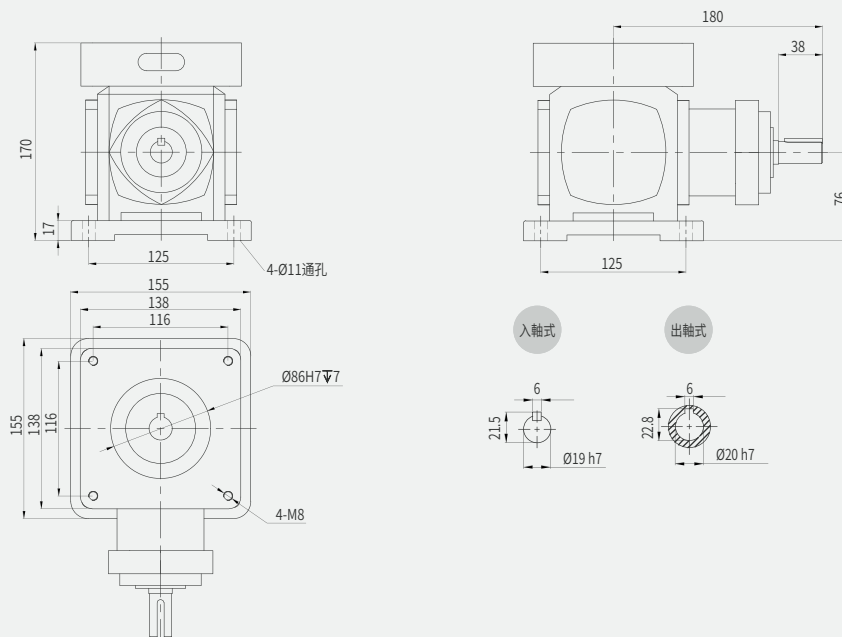
單位 Unit: mm



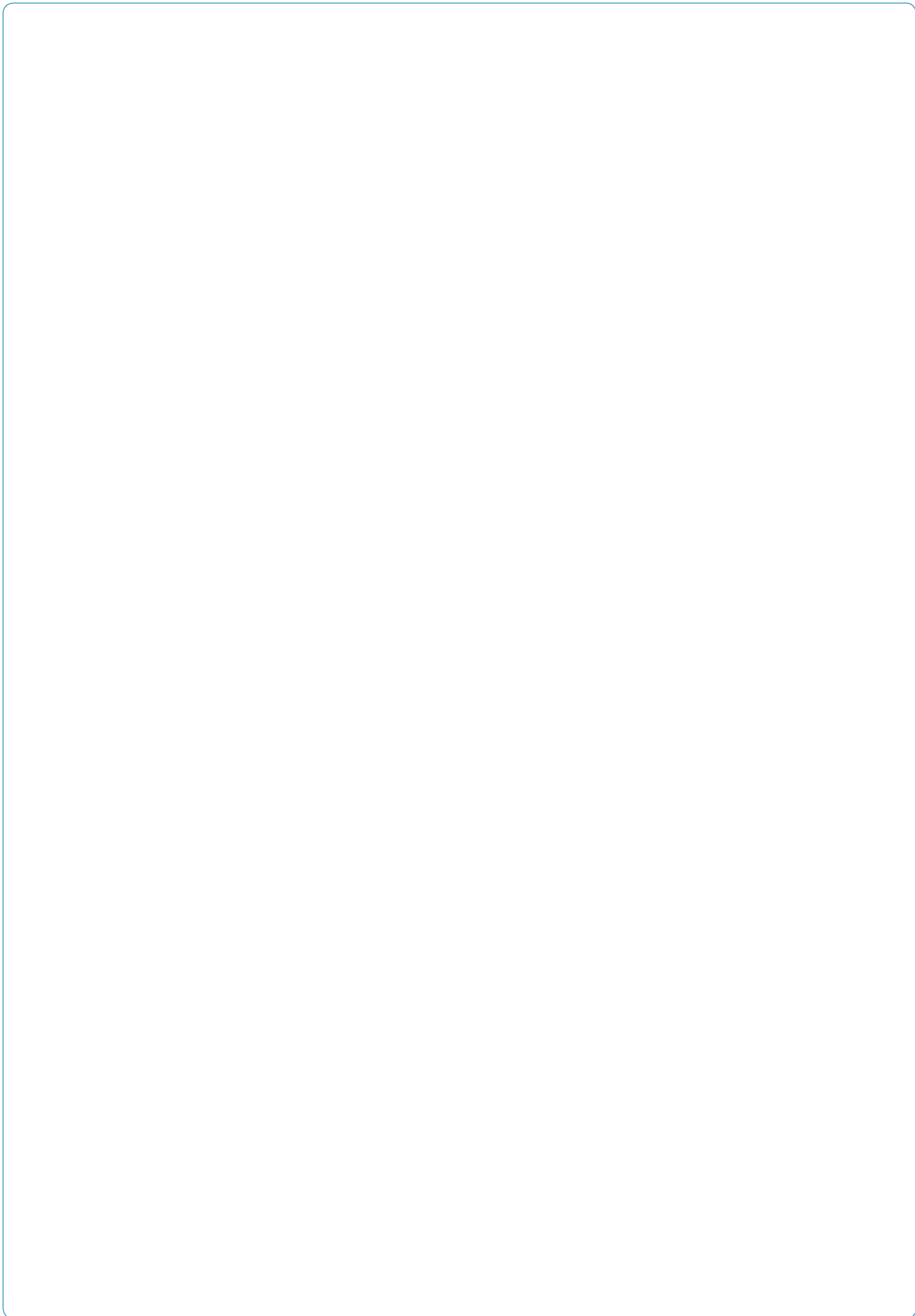
本圖面僅供參考用途，實際尺寸皆以實際提供之2D/3D圖紙為準 This drawing is for reference only. The actual dimensions are based on the actual 2D / 3D drawings provided.

AIMLG4M-I-I-UH-F / AIMLG4M-I-I-UH-O-F

單位 Unit: mm



本圖面僅供參考用途，實際尺寸皆以實際提供之2D/3D圖紙為準 This drawing is for reference only. The actual dimensions are based on the actual 2D / 3D drawings provided.



- 日規電缸滑台
JP linear actuator
- 歐規電缸滑台
EU linear actuator
- 超長型電缸滑台
Super length linear actuator
- 活塞杆電動缸
Cylinder actuator
- 旋轉台
Rotary stage
- 精密對位平台
Precision alignment stage
- 減速機
Gear reducer
- 十字轉向器
Bevel gearbox