

# KXG經濟型螺桿 直線電缸滑台

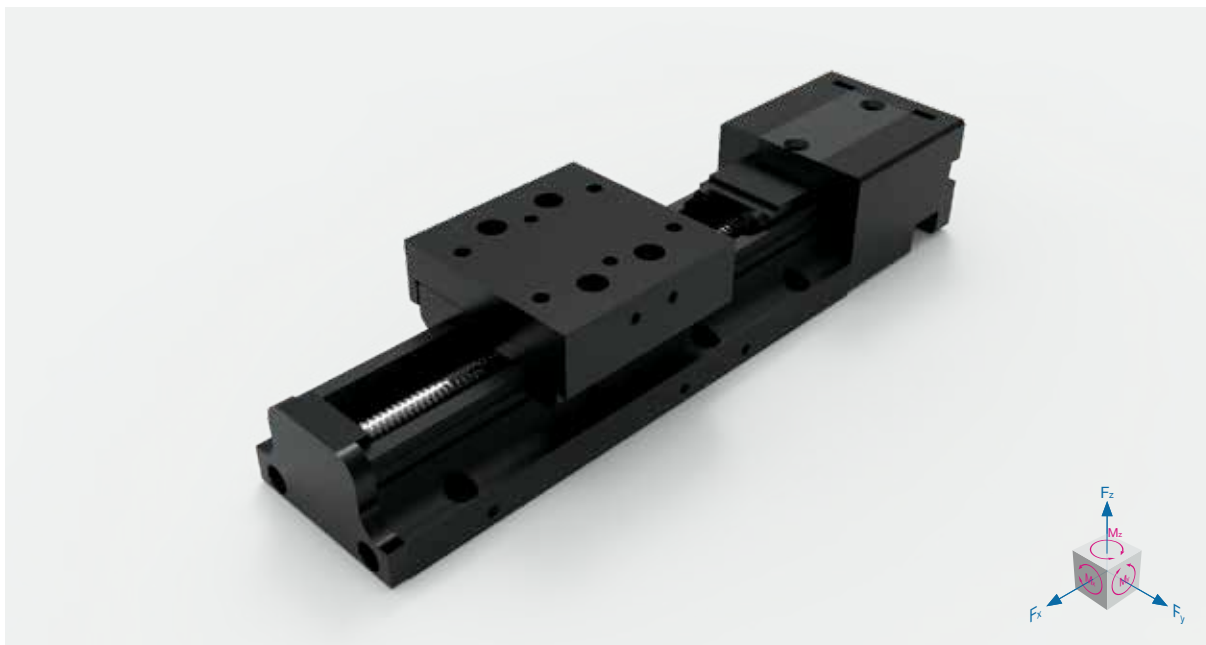
KXG ECONOMY  
SPINDLE AXES  
LINEAR ACTUATORS



# KXG經濟型螺桿直線電缸滑台

ECONOMY SPINDLE AXES LINEAR ACTUATORS

- KA電缸滑台  
圓線螺桿滑台
- Linear actuators
- KK電缸滑台  
KH螺桿滑台
- KXG電缸滑台  
KXG linear actuator



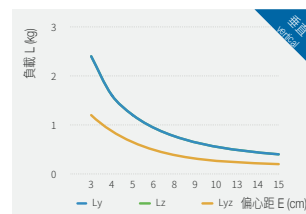
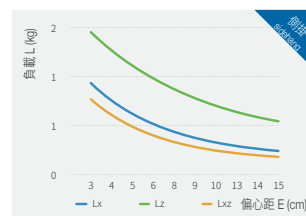
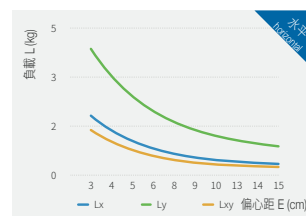
## AIMKXG - 40 - 100 - 0802 - 1P - IL - CM - S28 - O - S3

缸徑 Size (mm)	行程 Stroke (mm)	規格 Ball Screw Size (mm)	滑塊數量 Number of Slides	鎖位 Assembly Position	馬達安裝位置 Motor Position	馬達功率 Motor Power (W)	光電開關 Optical Sensor Position	開關數 Number of Sensors
直徑 Φ	導程 Pitch	1P 1個 1 Side	IL 內鎖 Inside	CM 直接安裝 Direct	S 步進馬達 Stepper Motor	O 外掛 Hang Outside	S3 3個開關 3x Sensors	Sn n個開關 nx Sensors
08	01 02					28	無 沒有 None	

● 有選項 Optional    ● 無選項 No options

馬達輸出 Motor Power (W)	28 步進		
額定扭矩 Torque (Nm)	0.09		
螺桿等級 Ball Screw Level	C5轉造 / C4研磨 Rolled Ball Screw / Ground Ball Screw		
重複定位精度 Rep. Accuracy (mm)	±0.005 / ±0.004		
螺桿規格 Ball Screw Size (mm)	Ø08	01	02
額定推力 Nominal Thrust (N)	440		220
最高速度 Maximum Speed (mm/s)	20		40
行程範圍 Stroke Range (mm)	C5	50/100/150/200/250	
	C4	15/20/50/100	
最大負載值 Maximum Load (Kg)	水平 Horizontal	5	
	側掛 Sidehang	3	
	垂直 Vertical	2.5	

力和力矩 Force and torques	$F_y$ (N)	32
	$F_z$ (N)	131
	$M_x$ (N.m)	1.6
	$M_y$ (N.m)	0.6
	$M_z$ (N.m)	0.6
	面積二次矩 2nd moment of area	$L_{xx}$ (cm <sup>2</sup> )
$L_{yy}$ (cm <sup>2</sup> )		1.1
光電開關 Optical Sensor	SUX-PM-L25	



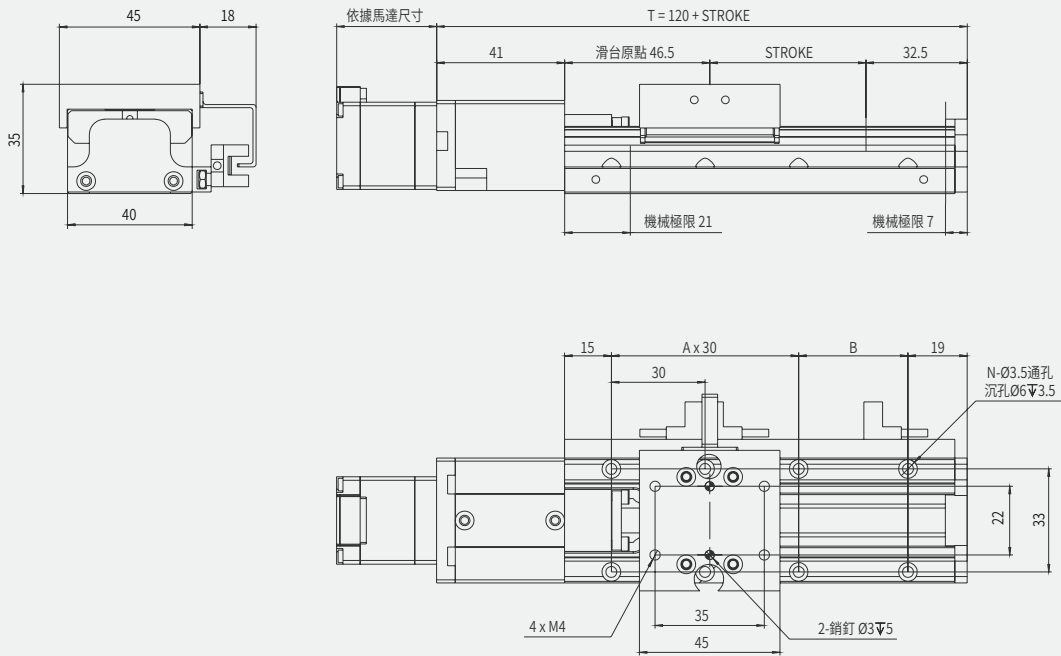
以上負載力矩曲線，客戶選用之負載需在我司產品最大負載範圍內 Above load torque curve, the loading should be within the maximum load range

KXG

40

50

60



行程 Stroke	15	20	50	100	150	200	250
T	135	140	170	220	270	320	370
B	30	35	35	25	15	35	25
A	1	1	2	4	6	7	9
N	6	6	8	12	16	18	22
重量 Weight (Kg)	0.53	0.55	0.65	0.82	0.99	1.16	1.33

本圖面僅供參考用途，實際尺寸皆以實際提供之2D/3D圖紙為準 This drawing is for reference only. The actual dimensions are based on the actual 2D / 3D drawings provided.

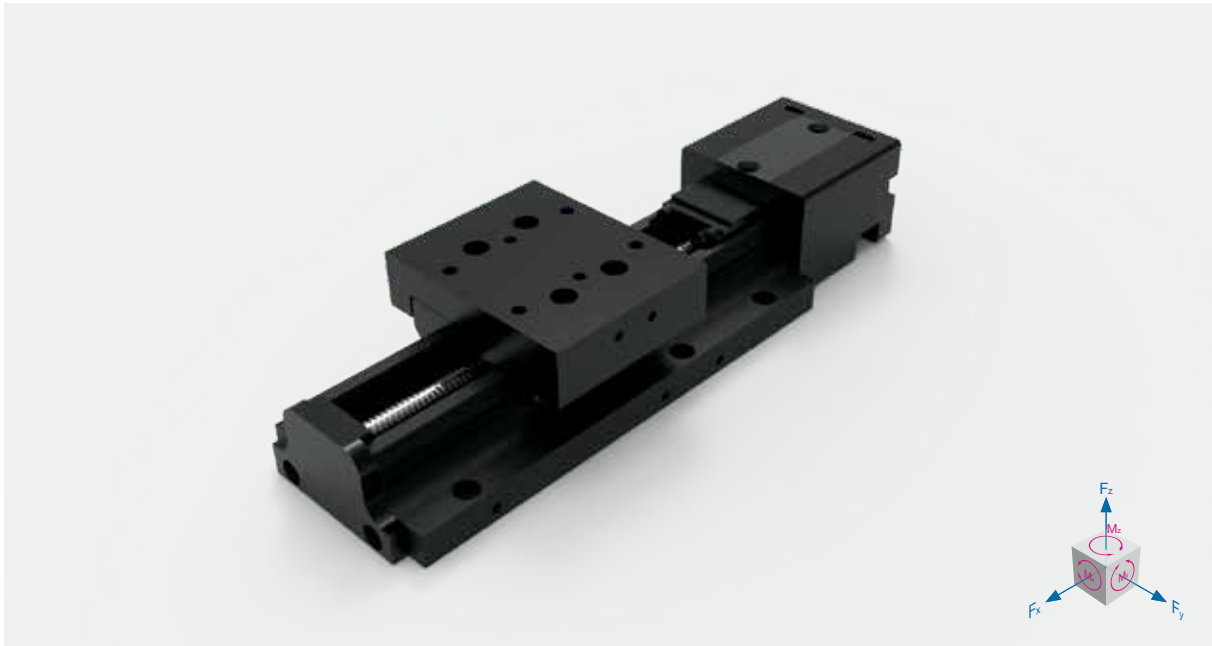
# KXG經濟型螺桿直線電缸滑台

## ECONOMY SPINDLE AXES LINEAR ACTUATORS

KA電缸滑台  
KA linear actuator

KK電缸滑台  
KK linear actuator

KXG電缸滑台  
KXG linear actuator



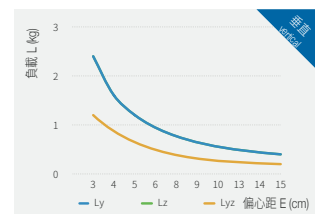
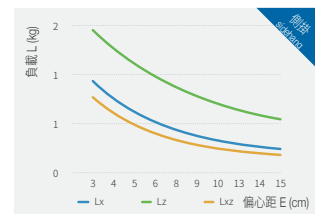
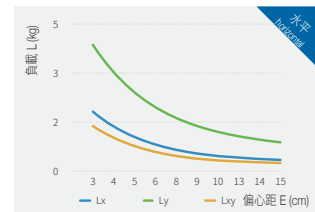
### AIMKXG - 50 - 100 - 0802 - 1P - IL - CM - S28 - O - S3

缸徑 Size (mm)	行程 Stroke (mm)	規格 Ball Screw Size (mm)	滑塊數量 Number of Slides	鎖位 Assembly Position	馬達安裝位置 Motor Position	馬達功率 Motor Power (W)	光電開關 Optical Sensor Position	開關數 Number of Sensors
直徑 Φ	導程 Pitch	1P	1個 1 Side	IL	內鎖 Inside	CM	直接安裝 Direct	S
08	01 02							
						S	步進馬達 Stepper Motor	28
							O	外掛 Hang Outside
							無	沒有 None
							S3	3個開關 3x Sensors
							Sn	n個開關 nx Sensors

● 有選項 Optional ● 無選項 No options

馬達輸出 Motor Power (W)	28 步進		
額定扭矩 Torque (Nm)	0.09		
螺桿等級 Ball Screw Level	C5轉造 / C4研磨 Rolled Ball Screw / Ground Ball Screw		
重複定位精度 Rep. Accuracy (mm)	±0.005 / ±0.004		
螺桿規格 Ball Screw Size (mm)	Ø08	01	02
額定推力 Nominal Thrust (N)	440		220
最高速度 Maximum Speed (mm/s)	20		40
行程範圍 Stroke Range (mm)	C5	50/100/150/200/250	
	C4	15/20/50/100	
最大負載值 Maximum Load (Kg)	水平 Horizontal	6	
	側掛 Sidehang	4	
	垂直 Vertical	3	

力和力矩 Force and torques	$F_y$ (N)	32
	$F_z$ (N)	131
	$M_x$ (N.m)	1.6
	$M_y$ (N.m)	0.6
	$M_z$ (N.m)	0.6
	面積二次矩 2nd moment of area	$L_{xx}$ (cm <sup>2</sup> )
$L_{yy}$ (cm <sup>2</sup> )		1.3
光電開關 Optical Sensor	SUX-PM-L25	



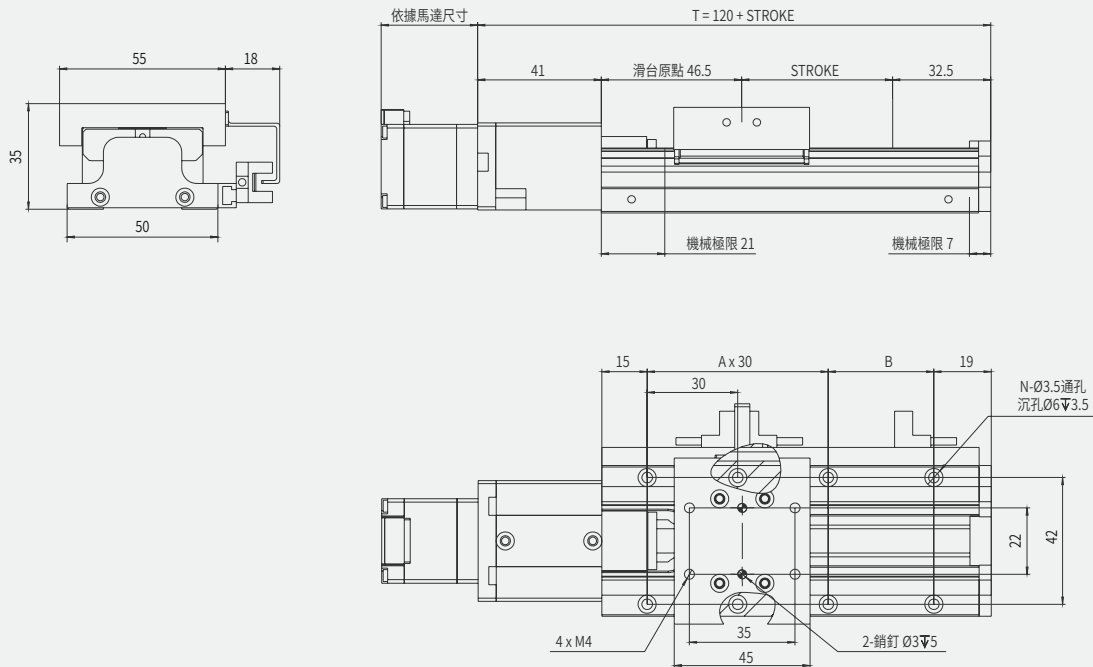
以上負載力矩曲線，客戶選用之負載需在我司產品最大負載範圍內 Above load torque curve, the loading should be within the maximum load range

KXG

40

50

60



行程 Stroke	15	20	50	100	150	200	250
T	135	140	170	220	270	320	370
B	30	35	35	25	15	35	25
A	1	1	2	4	6	7	8
N	6	6	8	12	16	18	20
重量 Weight (Kg)	0.695	0.71	0.8	0.95	1.1	1.25	1.4

本圖面僅供參考用途, 實際尺寸皆以實際提供之2D/3D圖紙為準 This drawing is for reference only. The actual dimensions are based on the actual 2D / 3D drawings provided.

# KXG經濟型螺桿直線電缸滑台

ECONOMY SPINDLE AXES LINEAR ACTUATORS

KA電缸滑台

KA linear actuator

KK電缸滑台

KK linear actuator

KXG電缸滑台

KXG linear actuator



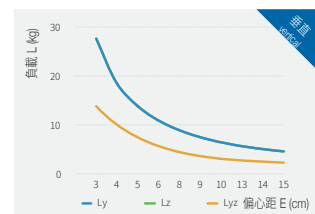
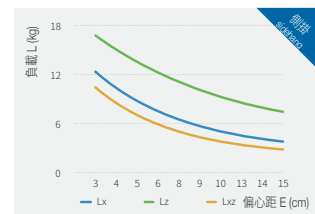
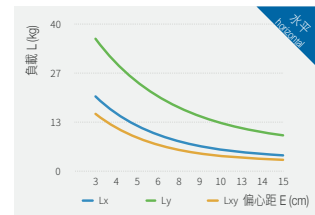
## AIMKXG - 60 - 100 - 1002 - 1P - IL - CM - M100 - O - S3

缸徑 Size (mm)	行程 Stroke (mm)	規格 Ball Screw Size (mm)	滑塊數量 Number of Slides	鎖位 Assembly Position	馬達安裝位置 Motor Position	馬達功率 Motor Power (W)	光電開關 Optical Sensor Position	開關數 Number of Sensors
直徑 Φ 10	導程 Pitch 02	1P 1個 1 Side	IL 內鎖 Inside	CM 直接安裝 Direct	M 三菱 Mitsubishi P 松下 Panasonic Y 安川 Yokogawa	T 台達 Delta O 其他 Others	O 外掛 Hang Outside 無 沒有 None	S3 3個開關 3x Sensors Sn n個開關 nx Sensors
						100		

● 有選項 Optional ● 無選項 No options

馬達輸出 Motor Power (W)	100	
額定扭矩 Torque (Nm)	0.32	
螺桿等級 Ball Screw Level	C5轉造 / C4研磨 Rolled Ball Screw / Ground Ball Screw	
重複定位精度 Rep. Accuracy (mm)	±0.005 / ±0.004	
螺桿規格 Ball Screw Size (mm)	Ø10	02
額定推力 Nominal Thrust (N)	800	
最高速度 Maximum Speed (mm/s)	100	
行程範圍 Stroke Range (mm)	50/100/150/200/250	
最大負載值 Maximum Load (Kg)	水平 Horizontal	9
	側掛 Sidehang	6
	垂直 Vertical	4

力和力矩 Force and torques	$F_y$ (N)	224
	$F_z$ (N)	778
	$M_x$ (N.m)	16.8
	$M_y$ (N.m)	6.9
	$M_z$ (N.m)	6.9
	面積二次矩 2nd moment of area	$L_{xx}$ (cm <sup>2</sup> )
$L_{yy}$ (cm <sup>2</sup> )		5.5
光電開關 Optical Sensor	SUX-PM-L25	



以上負載力矩曲線，客戶選用之負載需在我司產品最大負載範圍內 Above load torque curve, the loading should be within the maximum load range

KXG

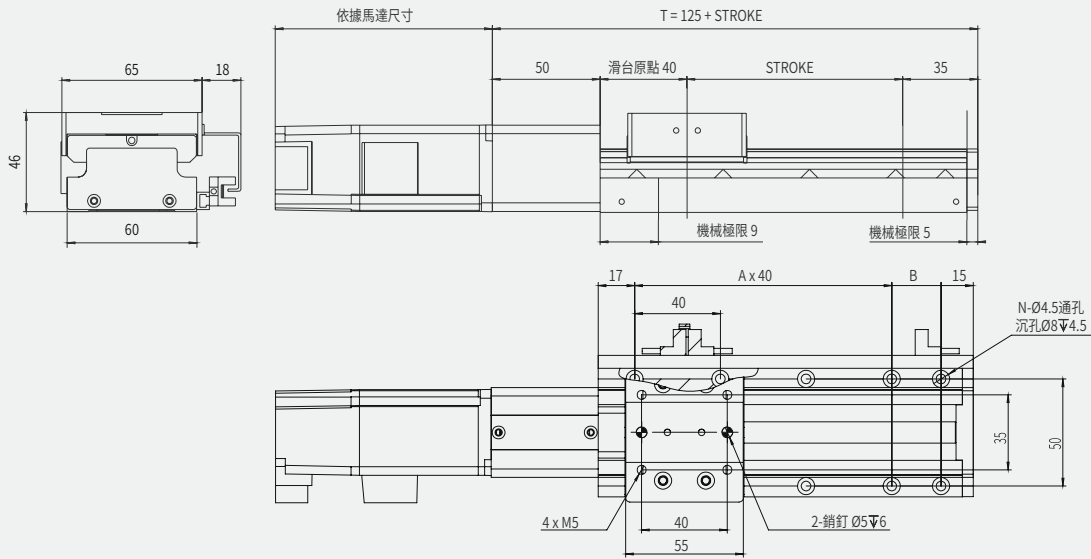
40

50

60

**AIMKXG60 標準型 standard**

單位 unit: mm

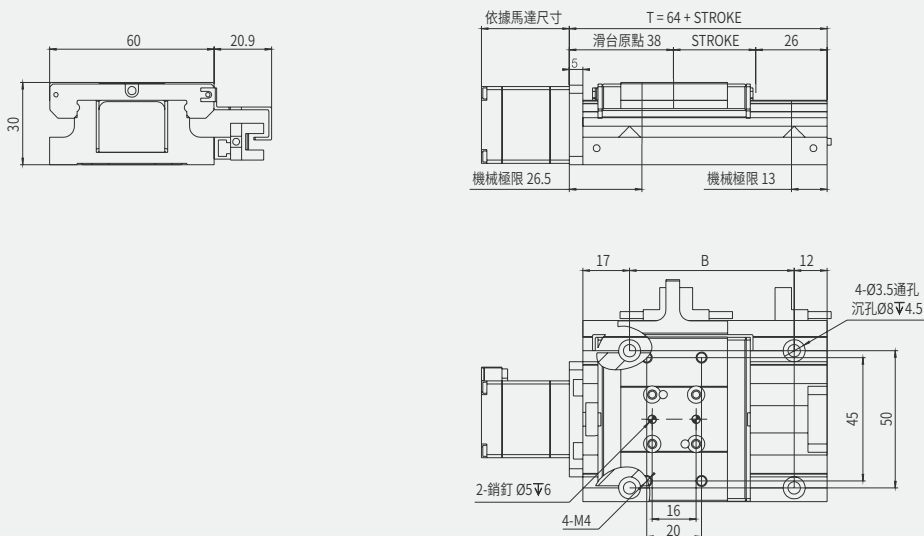


行程 Stroke	50	100	150	200	250
T	175	225	275	325	375
B	53	23	33	43	53
A	1	3	4	5	6
N	6	10	12	14	16
重量 Weight (Kg)	1.2	2.1	3	3.9	4.8

本圖面僅供參考用途，實際尺寸皆以實際提供之2D/3D圖紙為準 This drawing is for reference only. The actual dimensions are based on the actual 2D / 3D drawings provided.

**AIMKXG60m 縮短型 compact type**

單位 unit: mm



行程 Stroke	15	20	30
T	79	84	94
B	45	50	60
重量 Weight (Kg)	0.46	0.56	0.76

本圖面僅供參考用途，實際尺寸皆以實際提供之2D/3D圖紙為準 This drawing is for reference only. The actual dimensions are based on the actual 2D / 3D drawings provided.

 KA電缸滑台  
KA linear actuator

 KK電缸滑台  
KK linear actuator

 KXG電缸滑台  
KXG linear actuator

**KXG**

40

50

60