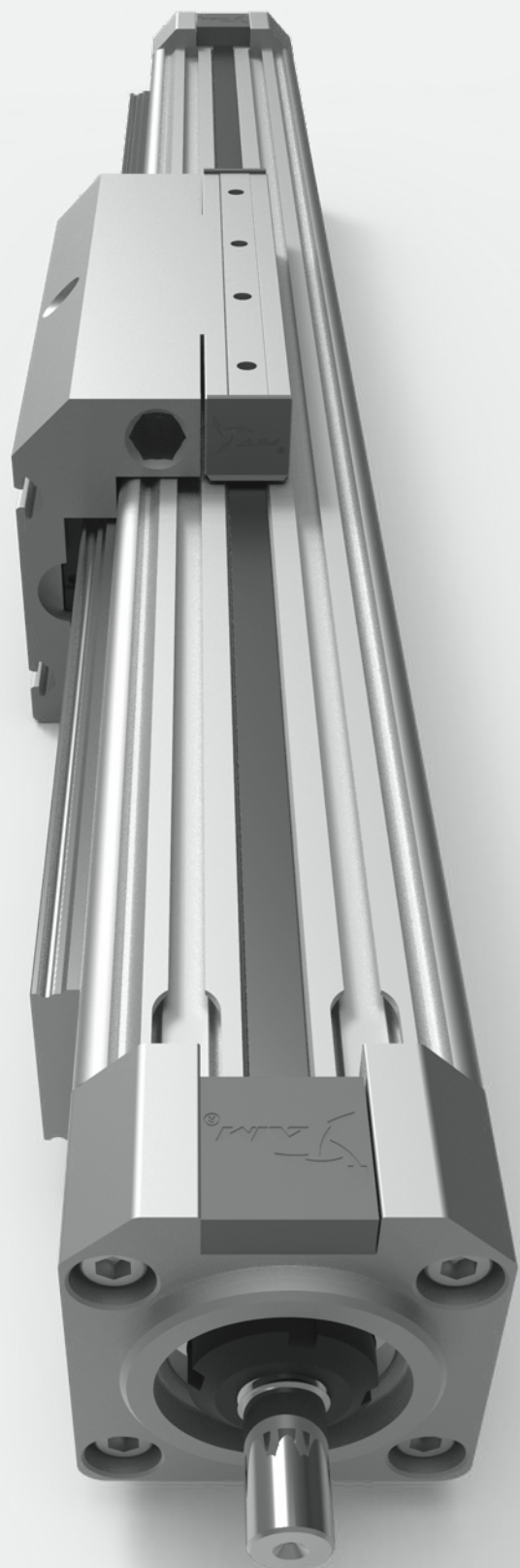


歐規螺桿  
導軌外置式  
直線電缸滑台

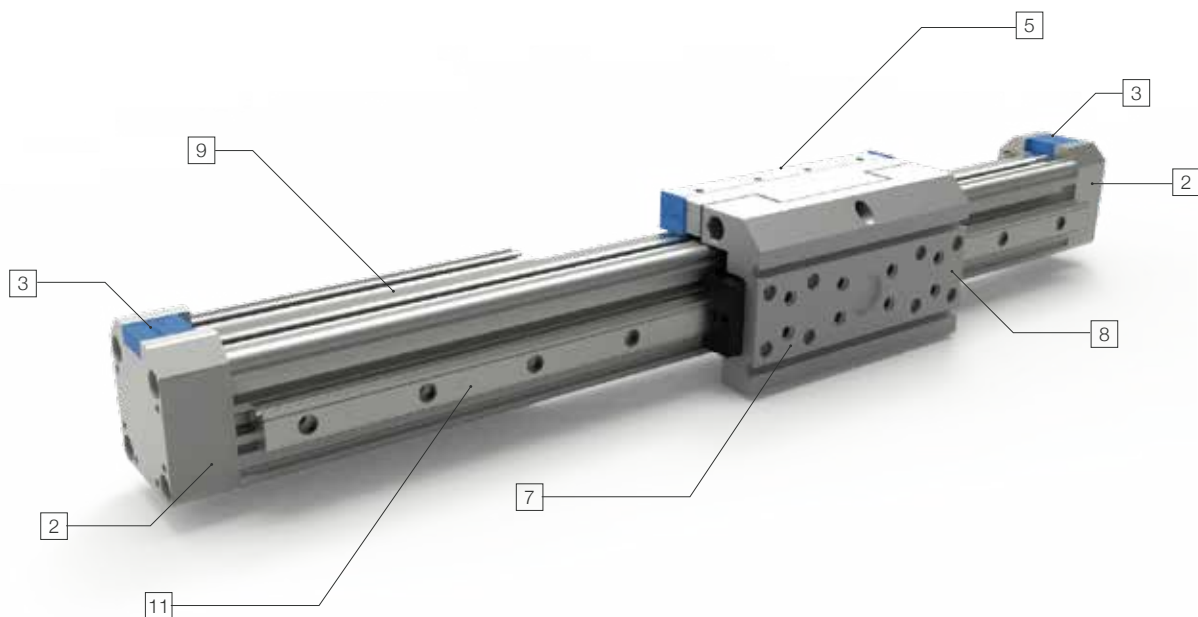
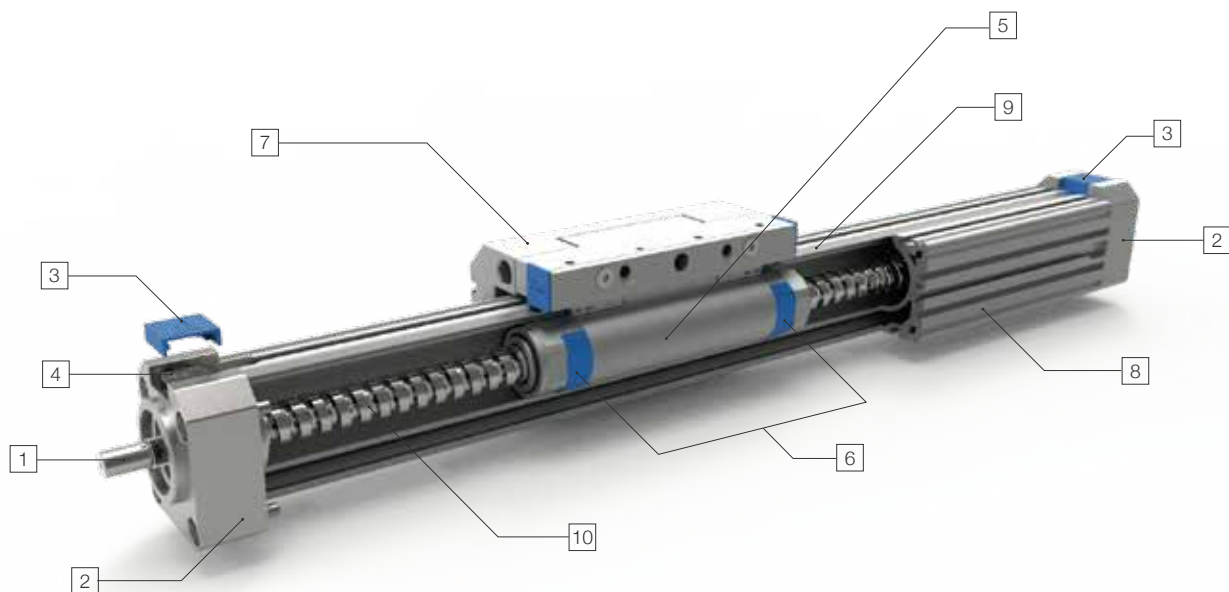
EU. SPINDLE AXES  
EXTERNAL GUIDE  
LINEAR ACTUATOR



# 產品結構分析

## PRODUCT STRUCTURE

- 日規電缸滑台  
JP linear actuator
- 歐規電缸滑台  
EU linear actuator
- 超長型電缸滑台  
Super length linear actuator
- 活塞缸電動缸  
Cylinder actuator
- 旋轉台  
Rotary stage
- 精密對位平台  
Precision alignment stage
- 減速機  
Gear reducer
- 十字轉向器  
Bevel gearbox
- 螺桿導軌外置  
Spindle axes external guide
- 螺桿導軌內置  
Spindle axes internal guide
- 同步帶  
Toothed belt axes
- 基本型  
Standard
- 導軌加強型  
Advance guide



- |        |          |          |       |
|--------|----------|----------|-------|
| 1 傳動軸  | 4 銅帶壓板   | 7 加強型滑動座 | 10 螺桿 |
| 2 端蓋   | 5 基本型滑動座 | 8 缸筒型材   | 11 導軌 |
| 3 塑膠扣件 | 6 耐磨環    | 9 不鏽鋼蓋條  |       |

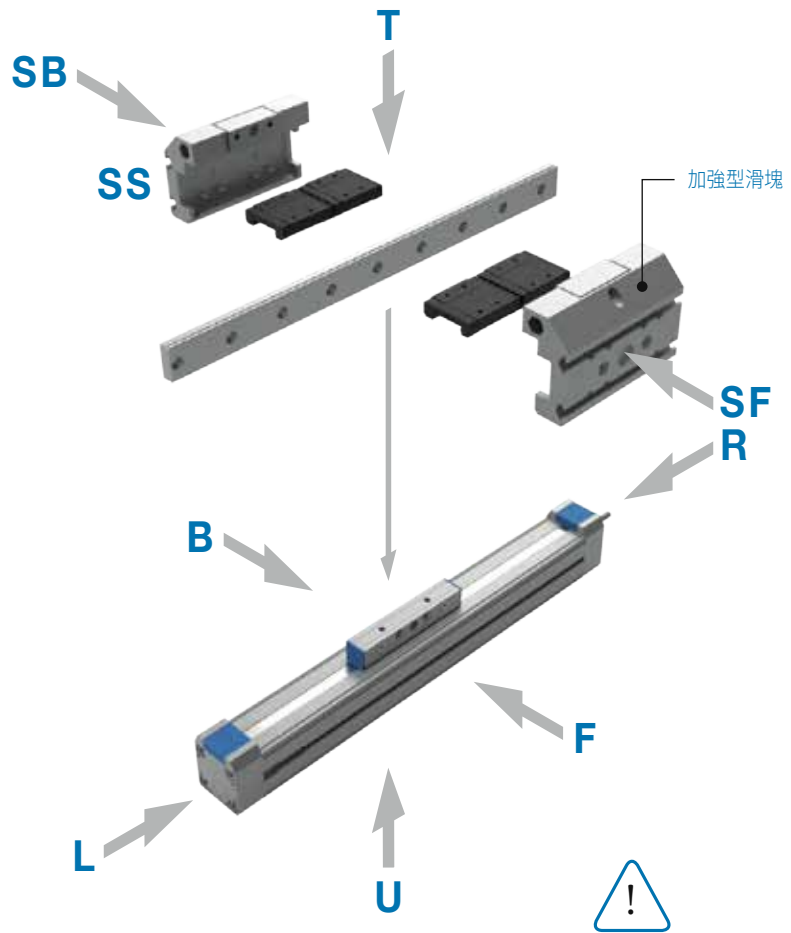
# 產品安裝配置圖

## PRODUCT CONFIGURATION

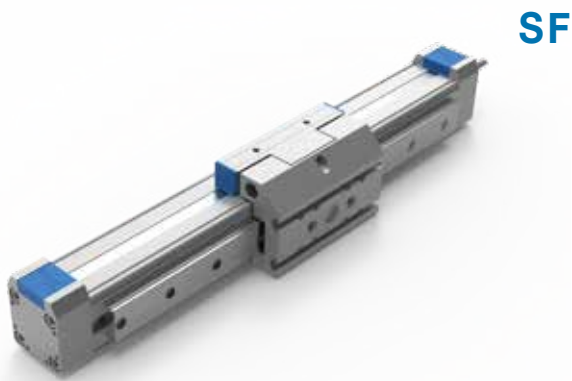


### 加強型滑動座配置 Slider Configuration

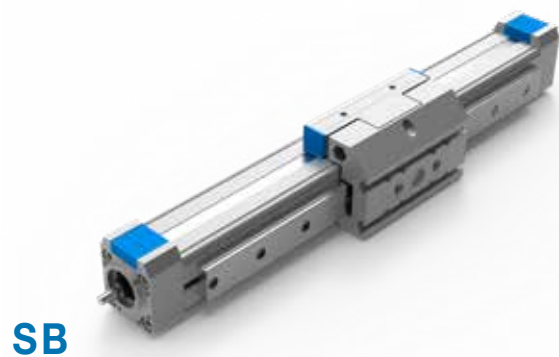
- T** = 頂部  
Top
- R** = 右方  
Right
- F** = 前方  
Front
- U** = 下方  
Under
- L** = 左方  
Left
- B** = 後方  
Back
- SF** = 滑動座前方安裝  
Front Slider
- SB** = 滑動座後方安裝  
Back Slider



傳動軸的出軸方向永遠為右方  
基本型滑塊的安裝位置永遠為頂部



SF 傳動軸位於右側



SB 傳動軸位於左側

日規電缸滑台 JP linear actuator
歐規電缸滑台 EU linear actuator
超長型電缸滑台 Super length linear actuator
活塞杆電動缸 Cylinder actuator
旋轉台 Rotary stage
精密對位平台 Precision alignment stage
減速機 Gear reducer
十字轉向器 Bevel gearbox
螺桿導軌外置 Spline axes external guide
螺桿導軌內置 Spline axes internal guide
同步帶 Toothed belt axis
基本型 Standard
導軌加強型 Advance guide

S

25

40

# 產品規格索引

## PRODUCT INDEX

尺寸 Size	導軌規格 Guide Type	馬達 Motor Spec		螺桿規格 (C7/C5級) Ball Screw Spec			最高速度 Max Speed (mm/s)	最大負載 Maximum Load (Kg)		
		功率 Motor Power (W)	額定扭矩 Nominal Thrust (N)	重複精度 Rep. Accuracy (mm)	直徑 Screw Diameter (mm)	導程 Pitch (mm)		水平 Horizontal	側掛 Sidehang	垂直 Vertical
25	LG1 / LG2	100	0.32	±0.02 / ±0.01	12	10	500	12	8	5
		200	0.64					15	8	5
		400	1.27					20	8	5
40	LG1 / LG2	200	0.64	±0.02 / ±0.01	20	10	500	20	10	8
		400	1.27					30	15	10
		750	2.39					40	20	12
		200	0.64		16	20	1000	20	10	8
		400	1.27					30	15	10
		750	2.39					40	20	12

- 基本型  
Standard
- 導軌加強型  
Advance guide

尺寸 Size	馬達 Motor Spec		螺桿規格 (C7/C5級) Ball Screw Spec			最高速度 Max Speed (mm/s)	最大負載 Maximum Load (Kg)		
	功率 Motor Power (W)	額定扭矩 Nominal Thrust (N)	重複精度 Rep. Accuracy (mm)	直徑 Screw Diameter (mm)	導程 Pitch (mm)		水平 Horizontal	側掛 Sidehang	垂直 Vertical
60i	400	1.27	±0.01 / ±0.005	12	10	500	25	12	8
80i	750	2.39	±0.01 / ±0.005	20	20	1000	50	25	12
112i	750	2.39	±0.01 / ±0.005	25	25	1250	100	60	30

S

25

40

標準行程及電缸最高速度 Stroke (mm) & Maximum Speed (mm/s)																					頁數 Page		
20	30	50	100	200	300	400	500	600	700	800	900	1000	1100	1200	1300	1400	1500	1600	1700	1800	1900	2000	
			500				488	376	299	243	202	170											1-153
			500				488	376	299	243	202	170											
			500				488	376	299	243	202	170											
			500				460	379	317	270	232	202	177	156									1-163
			500				460	379	317	270	232	202	177	156									
			500				460	379	317	270	232	202	177	156									
			1000				921	758	635														
			1000				921	758	635														
			1000				921	758	??														

標準行程及電缸最高速度 Stroke (mm) & Maximum Speed (mm/s)																					頁數 Page		
20	30	50	100	200	300	400	500	600	700	800	900	1000	1100	1200	1300	1400	1500	1600	1700	1800	1900	2000	
			500				476	368	293	239	199	168											1-172
			1000				956	784	655	555	476	413	362	320	284								1-175
			1250				1125	947	808	697	608	535	474	423	380	343	311	284	260				1-178

- 日規電缸滑台  
J linear actuator
- 歐規電缸滑台  
EU linear actuator
- 超長型電缸滑台  
Super length linear actuator
- 活塞杆電動缸  
Cylinder actuator
- 旋轉台  
Rotary stage
- 精密對位平台  
Precision alignment stage
- 減速機  
Gear reducer
- 十字轉向器  
Bevel gearbox
- 螺桿導軌外置  
Spindle axes external guide
- 螺桿導軌內置  
Spindle axes internal guide
- 同步帶  
Toothed belt axis
- 基本型  
Standard
- 導軌加強型  
Advance guide

# 歐規螺桿導軌外置電缸滑台

## EU. SPINDLE AXES EXTERNAL GUIDE LINEAR ACTUATOR

- 日規電缸滑台  
JP linear actuator
- 歐規電缸滑台  
EU linear actuator
- 超長型電缸滑台  
Super length linear actuator
- 活塞杆電動缸  
Cylinder actuator
- 旋轉台  
Rotary stage
- 精密對位平台  
Precision alignment stage
- 減速機  
Gear reducer
- 十字轉向器  
Bevel gearbox
- 螺桿導軌外置  
Spindle axes external guide
- 螺桿導軌內置  
Spindle axes internal guide
- 同步帶  
Toothed belt axes
- 基本型  
Standard
- 導軌加強型  
Advance guide



### AIMS 25 - 400 - 1210 - D - M100 - S3

螺桿式 Spindle Axes    缸徑 Size (mm)    行程 Stroke (mm)    規格 Ball Screw Size (mm)    馬達安裝位置 Motor Position    馬達功率 Motor Power (W)    開關數 Number of Sensors

直徑 Φ	導程 Pitch	D 直接安裝 Direct	M 三菱 Mitsubishi	T 台達 Delta	S3 3個開關 3x Sensors
12	05* 10	P 間接安裝 Parallel	P 松下 Panasonic	O 其他 Others	Sn n個開關 nx Sensors
*僅供C5螺桿 C5 Ball Screw Only			Y 安川 Yokawa	100 / 200 / 400	

● 有選項 Optional    ● 無選項 No options

馬達輸出 Motor Power (W)	100 / 200 / 400			力和力矩 Force and torques	F <sub>y</sub> (N)	-
額定扭矩 Torque (Nm)	0.32 / 0.64 / 1.27				F <sub>z</sub> (N)	2
螺桿等級 Ball Screw Level	C7 轉造 / C5 研磨* C7 Rolled Ball Screw / C5 Ground Ball Screw*				M <sub>x</sub> (N.m)	1
重複定位精度 Rep. Accuracy (mm)	±0.02 / ±0.01*				M <sub>y</sub> (N.m)	1.5
螺桿規格 Ball Screw Size (mm)	Ø12	05*	10		M <sub>z</sub> (N.m)	1.5
額定推力 Nominal Thrust (N)	100 (W)	340	170	面積二次矩 2nd moment of area	L <sub>xx</sub> (cm <sup>4</sup> )	22.39
	200 (W)	690	340		L <sub>yy</sub> (cm <sup>4</sup> )	244.1
	400 (W)	1360	690	0mm行程基本重量 Basic Weight for 0mm Stroke (kg)	1.45	
最高速度 Max. Speed (mm/s)	250			每100mm行程增加重量 Additional Weight per 100mm Stroke (kg)	0.36	
行程範圍 Stroke Range (mm)	100...1000 / 100 間隔 Pitch			磁簧開關 Proximity Sensor	CS1-M-1M 觸點式1米 1m Contact Type	
最大負載值 Max. Load (Kg)	水平 Horizontal	-			CS1-MN-3M 無觸點NPN型3米 1m Contactless NPN Transistor	
	側掛 Sidehang	-			CS1-MP-3M 無觸點PNP型3米 1m Contactless PNP Transistor	
	垂直 Vertical	-				

以上負載力矩曲線，客戶選用之負載需在我司產品最大負載範圍內 Above load torque curve, the loading should be within the maximum load range

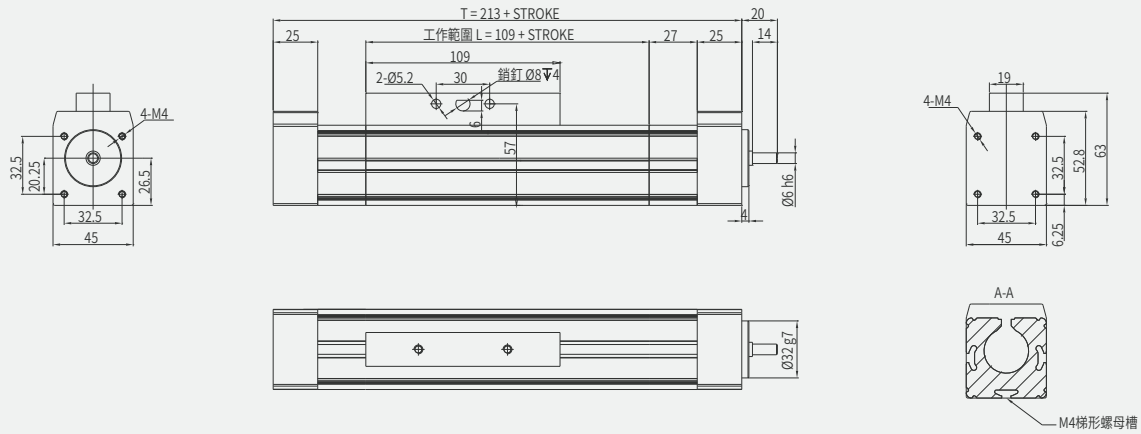
S

25

40

**AIMS25 基本型 standard**

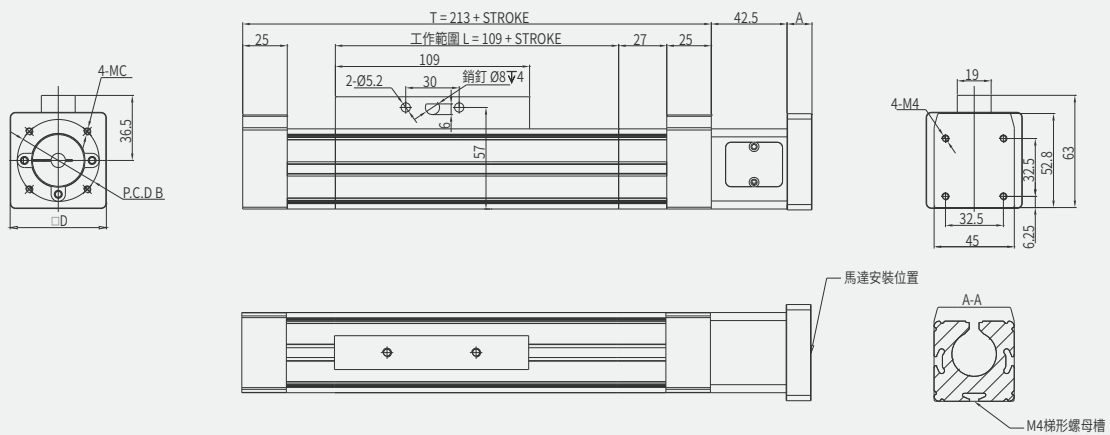
單位 Unit: mm



本圖面僅供參考用途，實際尺寸皆以實際提供之2D/3D圖紙為準 This drawing is for reference only. The actual dimensions are based on the actual 2D / 3D drawings provided.

**AIMS25-D 基本型直接安裝 motor direct installed**

單位 Unit: mm



	A	B	C	D
100 W	14	45 / 46	M3 / M4	54
200 W	19	70	M4 / M5	60
400 W	19	70	M4 / M5	60

本圖面僅供參考用途，實際尺寸皆以實際提供之2D/3D圖紙為準 This drawing is for reference only. The actual dimensions are based on the actual 2D / 3D drawings provided.

- 日規電缸滑台  
J linear actuator
- 歐規電缸滑台  
EU linear actuator
- 超長型電缸滑台  
Super length linear actuator
- 活塞杆電動缸  
Cylinder actuator
- 旋轉台  
Rotary stage
- 精密對位平台  
Precision alignment stage
- 減速機  
Gear reducer
- 十字轉向器  
Bevel gearbox
- 螺桿導軌外置  
Sprocket axes external guide
- 螺桿導軌內置  
Sprocket axes internal guide
- 同步帶  
Toothed belt axis
- 基本型  
Standard
- 導軌加強型  
Advance guide

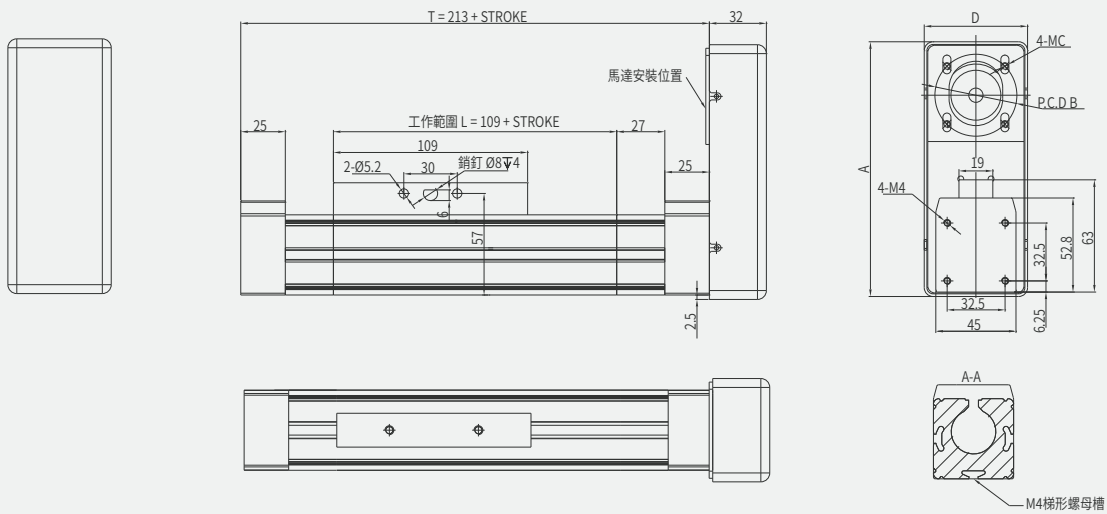
**S**

25

40

AIMS25-P 基本型間接安裝 motor parallel installed

單位 Unit: mm



	A	B	C	D
100 W	143	45 / 46	M3 / M4	58
200 W	149	70	M4 / M5	64
400 W	149	70	M4 / M5	64

本圖面僅供參考用途, 實際尺寸皆以實際提供之2D/3D圖紙為準 This drawing is for reference only. The actual dimensions are based on the actual 2D / 3D drawings provided.



# 歐規螺桿導軌外置電缸滑台

EU. SPINDLE AXES EXTERNAL GUIDE LINEAR ACTUATOR



- 日規電缸滑台  
Linear actuator
- 歐規電缸滑台  
EU linear actuator
- 超長型電缸滑台  
Super length linear actuator
- 活塞杆電動缸  
Cylinder actuator
- 旋轉台  
Rotary stage
- 精密對位平台  
Precision alignment stage
- 減速機  
Gear reducer
- 十字轉向器  
Bevel gearbox
- 螺桿導軌外置  
Spindle axes external guide
- 螺桿導軌內置  
Spindle axes internal guide
- 同步帶  
Toothed belt axis
- 基本型  
Standard
- 導軌加強型  
Advance guide

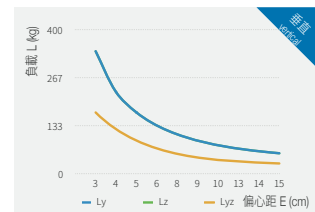
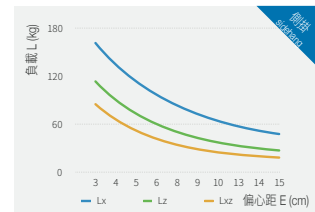
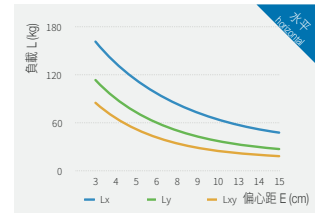
## AIMS 25 - 400 - 1210 - LG1 - SF - SS1 - D - M100 - S3

螺桿式 Spindle Axes	缸徑 Size (mm)	行程 Stroke (mm)	規格 Ball Screw Size (mm)	導軌 Guide Type	導軌位置 Guide Position	加強型滑座數量 Number of Slide	馬達安裝位置 Motor Position	馬達功率 Motor Power (W)	開關數 Number of Sensors
	12	05* 10		LG1 高軌 High Guide LG2 寬軌 Wide Guide	SF 前置 Front SB 後置 Back	SS1 1個滑座 1x Slide SSn n個滑座 nx Slides	D 直接安裝 Direct P 間接安裝 Parallel	M 三菱 Mitsubishi T 台達 Delta P 松下 Panasonic O 其他 Others Y 安川 Yaskawa	S3 3個開關 3x Sensors Sn n個開關 nx Sensors
*僅供C5螺桿 C5 Ball Screw Only				100 / 200 / 400					

● 有選項 Optional    ● 無選項 No options

馬達輸出 Motor Power (W)	100 / 200 / 400		
額定扭矩 Torque (Nm)	0.32 / 0.64 / 1.27		
螺桿等級 Ball Screw Level	C7 轉造 / C5 研磨* C7 Rolled Ball Screw / C5 Ground Ball Screw*		
重複定位精度 Rep. Accuracy (mm)	±0.02 / ±0.01*		
螺桿規格 Ball Screw Size (mm)	Ø12	05*	10
額定推力 Nominal Thrust (N)	100 (W)	340	170
	200 (W)	690	340
	400 (W)	1360	690
最高速度 Max. Speed (mm/s)	250		500
行程範圍 Stroke Range (mm)	100...1000 / 100 間隔 Pitch		
最大負載值 Max. Load (Kg)	水平 Horizontal	12 / 15 / 20	
	側掛 Sidehang	8	
	垂直 Vertical	5	

力和力矩 Force and torques	F <sub>y</sub> (N)	3080
	F <sub>z</sub> (N)	3080
	M <sub>x</sub> (N.m)	45
	M <sub>y</sub> (N.m)	85
	M <sub>z</sub> (N.m)	85
	面積二次矩 2nd moment of area	L <sub>xx</sub> (cm <sup>2</sup> )
L <sub>yy</sub> (cm <sup>2</sup> )		25
0mm行程基本重量 Basic Weight for 0mm Stroke (kg)		2.05
每100mm行程增加重量 Additional Weight per 100mm Stroke (kg)	0.46	
磁簧開關 Proximity Sensor	CS1-M-1M 觸點式1米 1m Contact Type	
	CS1-MN-3M 無觸點NPN型3米 3m Contactless NPN Transistor	
	CS1-MP-3M 無觸點PNP型3米 3m Contactless PNP Transistor	

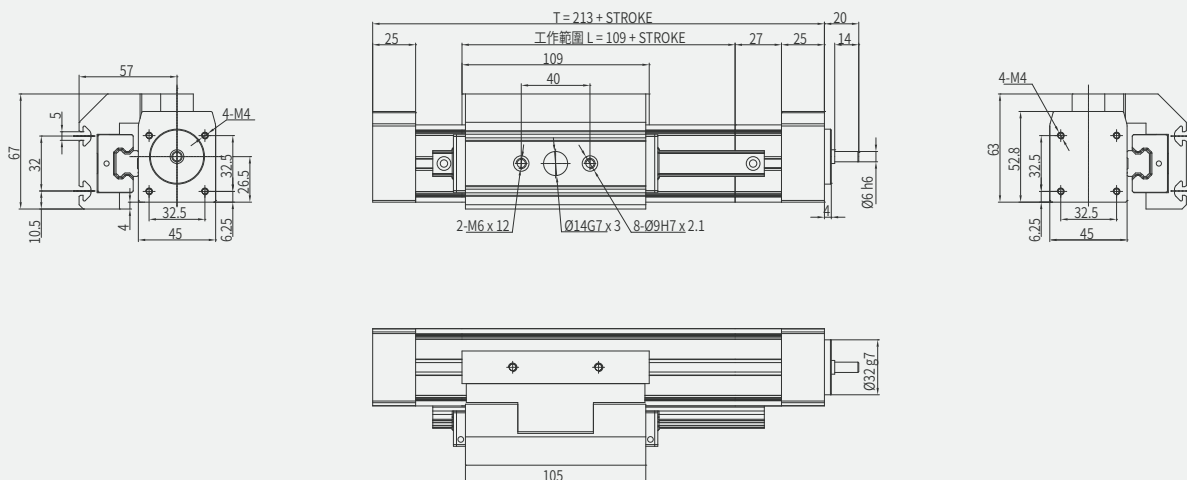


以上負載力矩曲線，客戶選用之負載需在我司產品最大負載範圍內 Above load torque curve, the loading should be within the maximum load range

- S
- 25
- 40

AIMS25-LG1-SF 高軌前置基本型 high guide standard

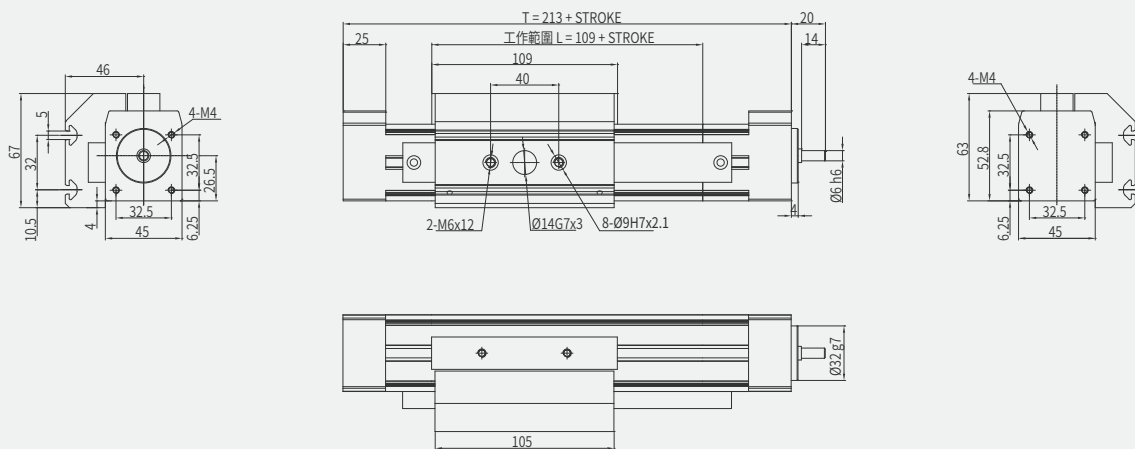
單位 Unit: mm



本圖面僅供參考用途，實際尺寸皆以實際提供之2D/3D圖紙為準 This drawing is for reference only. The actual dimensions are based on the actual 2D / 3D drawings provided.

AIMS25-LG2-SF 寬軌前置基本型 wide guide standard

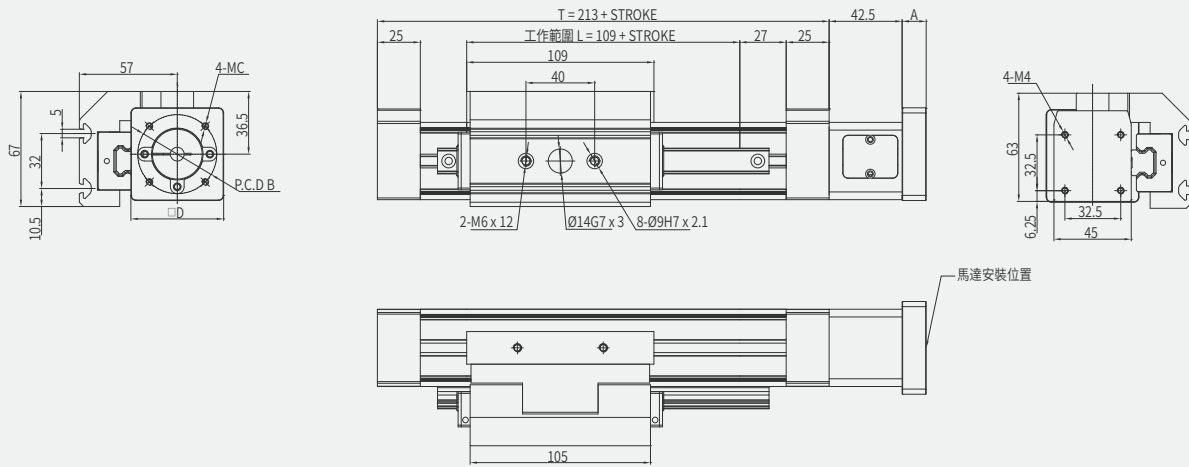
單位 Unit: mm



本圖面僅供參考用途，實際尺寸皆以實際提供之2D/3D圖紙為準 This drawing is for reference only. The actual dimensions are based on the actual 2D / 3D drawings provided.

**AIMS25-LG1-SF-D 高軌前置直接安裝 high guide motor direct installed**

單位 Unit: mm

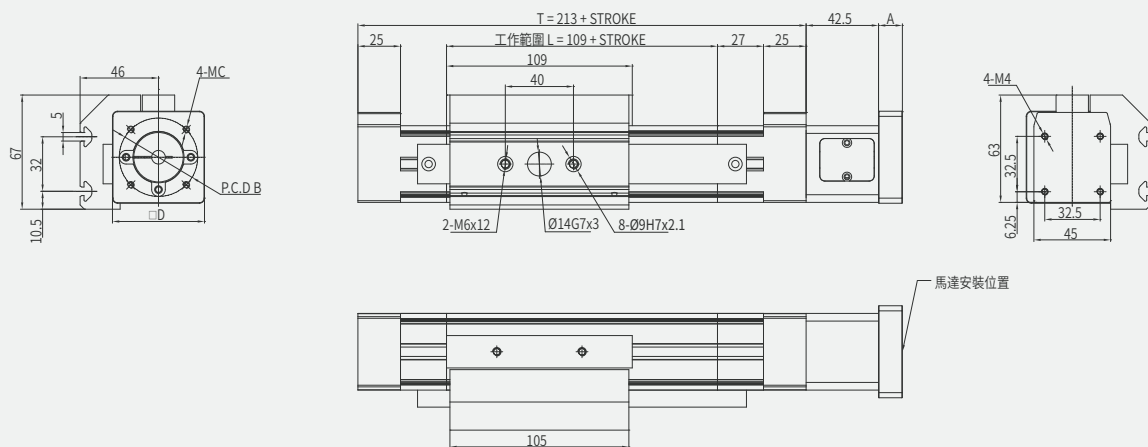


	A	B	C	D
100 W	14	45 / 46	M3 / M4	54
200 W	19	70	M4 / M5	60
400 W	19	70	M4 / M5	60

本圖面僅供參考用途，實際尺寸皆以實際提供之2D/3D圖紙為準 This drawing is for reference only. The actual dimensions are based on the actual 2D / 3D drawings provided.

**AIMS25-LG2-SF-D 寬軌前置直接安裝 wide guide motor direct installed**

單位 Unit: mm



	A	B	C	D
100 W	14	45 / 46	M3 / M4	54
200 W	19	70	M4 / M5	60
400 W	19	70	M4 / M5	60

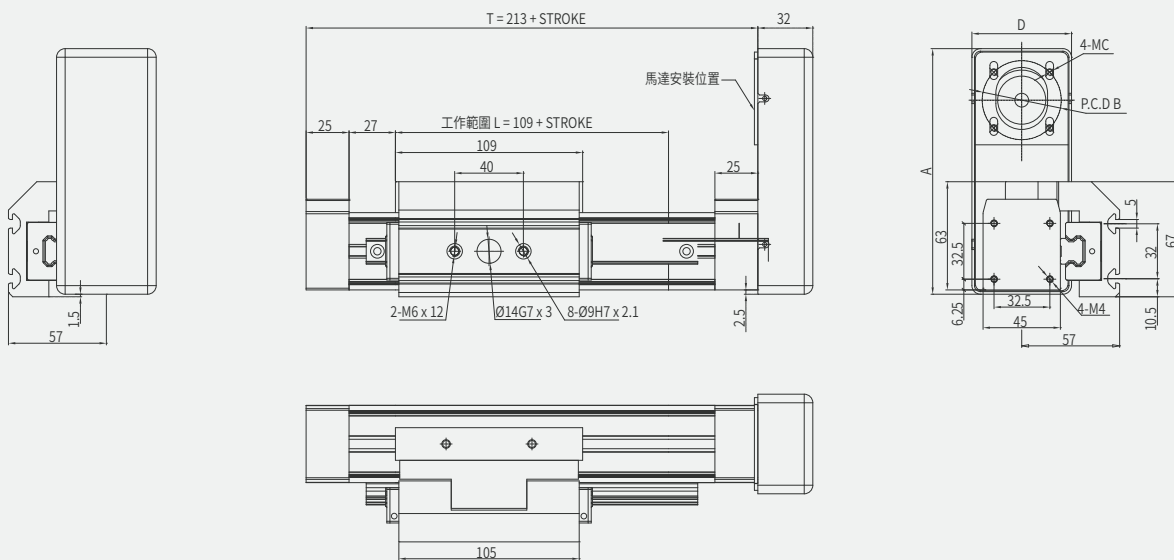
本圖面僅供參考用途，實際尺寸皆以實際提供之2D/3D圖紙為準 This drawing is for reference only. The actual dimensions are based on the actual 2D / 3D drawings provided.

- 日規電缸滑台  
Linear actuator
- 歐規電缸滑台  
EU linear actuator
- 超長型電缸滑台  
Super length linear actuator
- 活塞杆電動缸  
Cylinder actuator
- 旋轉台  
Rotary stage
- 精密對位平台  
Precision alignment stage
- 減速機  
Gear reducer
- 十字轉向器  
Bevel gearbox
- 螺桿導軌外置  
Sprocket axes external guide
- 螺桿導軌內置  
Sprocket axes internal guide
- 同步帶  
Toothed belt axis
- 基本型  
Standard
- 導軌加強型  
Advance guide

- S
- 25
- 40

AIMS25-LG1-SF-P 高軌前置間接安裝 high guide motor parallel installed

單位 Unit: mm

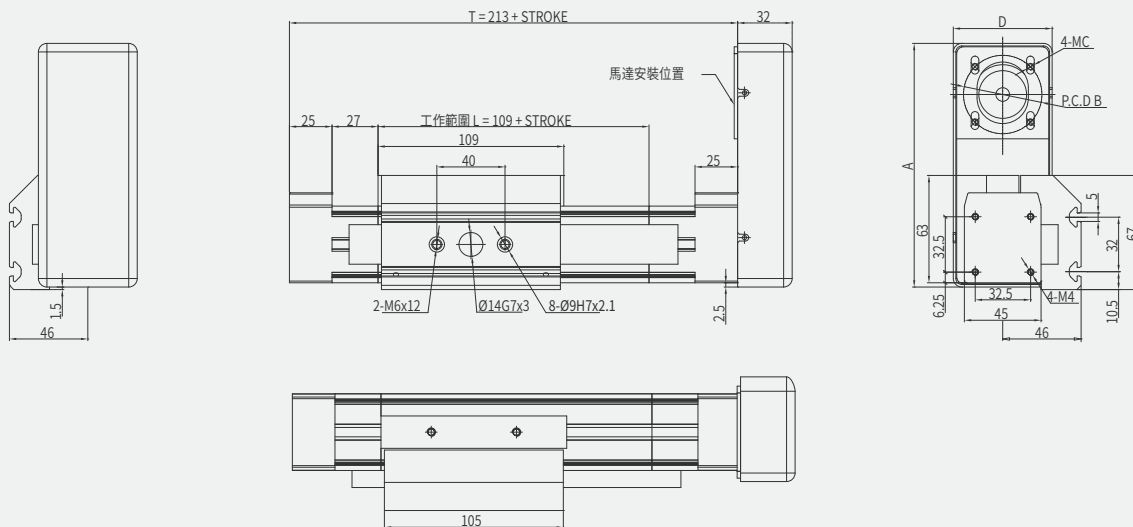


	A	B	C	D
100 W	143	45 / 46	M3 / M4	58
200 W	149	70	M4 / M5	64
400 W	149	70	M4 / M5	64

本圖面僅供參考用途，實際尺寸皆以實際提供之2D/3D圖紙為準 This drawing is for reference only. The actual dimensions are based on the actual 2D / 3D drawings provided.

AIMS25-LG2-SF-P 寬軌前置間接安裝 wide guide motor parallel installed

單位 Unit: mm

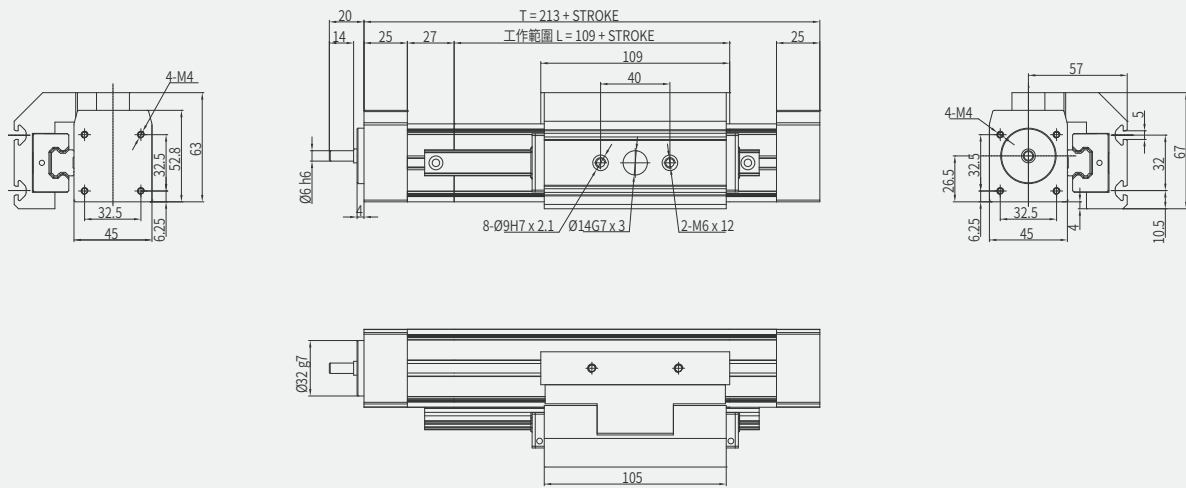


	A	B	C	D
100 W	143	45 / 46	M3 / M4	58
200 W	149	70	M4 / M5	64
400 W	149	70	M4 / M5	64

本圖面僅供參考用途，實際尺寸皆以實際提供之2D/3D圖紙為準 This drawing is for reference only. The actual dimensions are based on the actual 2D / 3D drawings provided.

AIMS25-LG1-SB 高軌後置基本型 high guide standard

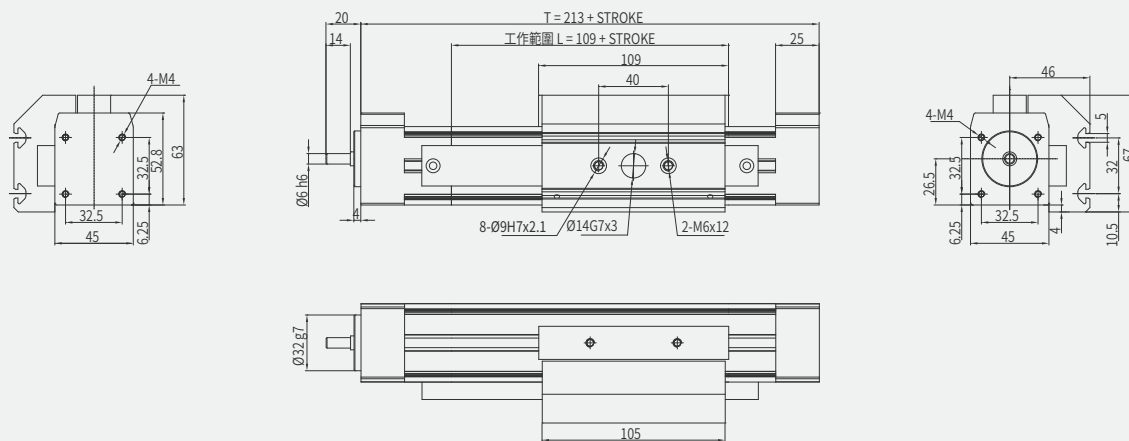
單位 Unit: mm



本圖面僅供參考用途，實際尺寸皆以實際提供之2D/3D圖紙為準 This drawing is for reference only. The actual dimensions are based on the actual 2D / 3D drawings provided.

AIMS25-LG2-SB 寬軌後置基本型 wide guide standard

單位 Unit: mm



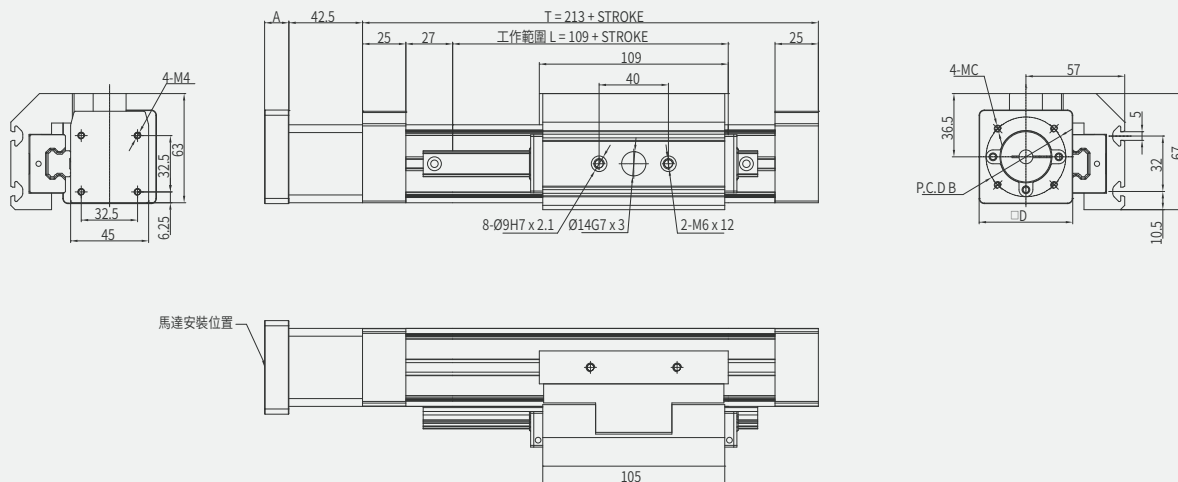
本圖面僅供參考用途，實際尺寸皆以實際提供之2D/3D圖紙為準 This drawing is for reference only. The actual dimensions are based on the actual 2D / 3D drawings provided.

- 日規電缸滑台  
Linear actuator
- 歐規電缸滑台  
EU linear actuator
- 超長型電缸滑台  
Super length linear actuator
- 活塞杆電動缸  
Cylinder actuator
- 旋轉台  
Rotary stage
- 精密對位平台  
Precision alignment stage
- 減速機  
Gear reducer
- 十字轉向器  
Bevel gearbox
- 螺桿導軌外置  
Spiral axes external guide
- 螺桿導軌內置  
Spiral axes internal guide
- 同步帶  
Toothed belt axis
- 基本型  
Standard
- 導軌加強型  
Advance guide

- S
- 25
- 40

AIMS25-LG1-SB-D 高軌後置直接安裝 high guide motor direct installed

單位 Unit: mm

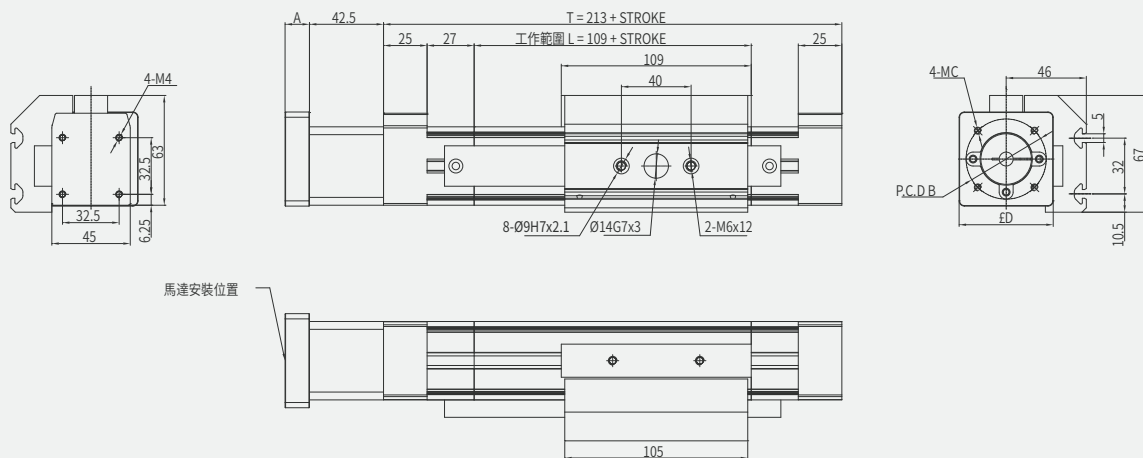


	A	B	C	D
100 W	14	45 / 46	M3 / M4	54
200 W	19	70	M4 / M5	60
400 W	19	70	M4 / M5	60

本圖面僅供參考用途，實際尺寸皆以實際提供之2D/3D圖紙為準 This drawing is for reference only. The actual dimensions are based on the actual 2D / 3D drawings provided.

AIMS25-LG2-SB-D 寬軌後置直接安裝 wide guide motor direct installed

單位 Unit: mm

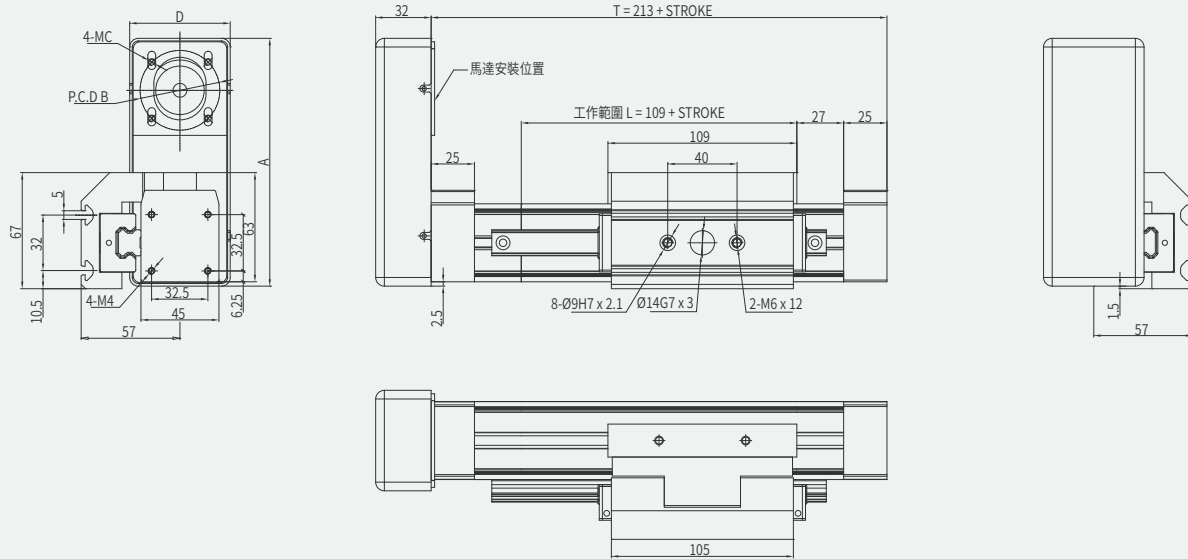


	A	B	C	D
100 W	14	45 / 46	M3 / M4	54
200 W	19	70	M4 / M5	60
400 W	19	70	M4 / M5	60

本圖面僅供參考用途，實際尺寸皆以實際提供之2D/3D圖紙為準 This drawing is for reference only. The actual dimensions are based on the actual 2D / 3D drawings provided.

**AIMS25-LG1-SB-P 高軌後置間接安裝 high guide motor parallel installed**

單位 Unit: mm

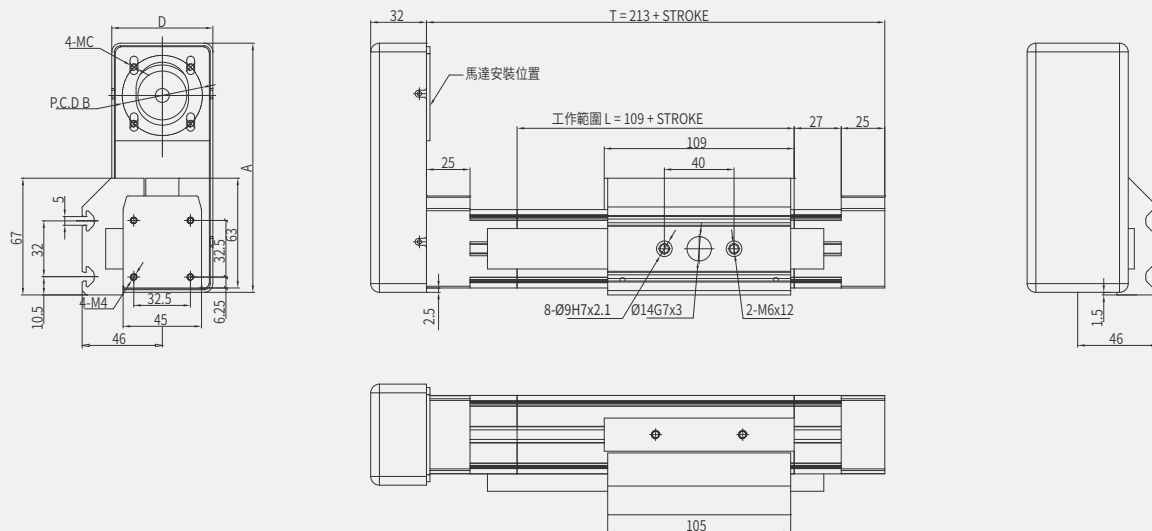


	A	B	C	D
100 W	143	45 / 46	M3 / M4	58
200 W	149	70	M4 / M5	64
400 W	149	70	M4 / M5	64

本圖面僅供參考用途，實際尺寸皆以實際提供之2D/3D圖紙為準 This drawing is for reference only. The actual dimensions are based on the actual 2D / 3D drawings provided.

**AIMS25-LG2-SB-P 寬軌後置間接安裝 wide guide motor parallel installed**

單位 Unit: mm



	A	B	C	D
100 W	143	45 / 46	M3 / M4	58
200 W	149	70	M4 / M5	64
400 W	149	70	M4 / M5	64

本圖面僅供參考用途，實際尺寸皆以實際提供之2D/3D圖紙為準 This drawing is for reference only. The actual dimensions are based on the actual 2D / 3D drawings provided.

- 日規電缸滑台  
Linear actuator
- 歐規電缸滑台  
EU linear actuator
- 超長型電缸滑台  
Super length linear actuator
- 活塞杆電動缸  
Cylinder actuator
- 旋轉台  
Rotary stage
- 精密對位平台  
Precision alignment stage
- 減速機  
Gear reducer
- 十字轉向器  
Bevel gearbox
- 螺桿導軌外置  
Spline axes external guide
- 螺桿導軌內置  
Spline axes internal guide
- 同步帶  
Toothed belt axis
- 基本型  
Standard
- 導軌加強型  
Advance guide

**S**

25

40

# 歐規螺桿導軌外置電缸滑台

## EU. SPINDLE AXES EXTERNAL GUIDE LINEAR ACTUATOR

- 日規電缸滑台  
JP linear actuator
- 歐規電缸滑台  
EU linear actuator
- 超長型電缸滑台  
Super length linear actuator
- 活塞杆電動缸  
Cylinder actuator
- 旋轉台  
Rotary stage
- 精密對位平台  
Precision alignment stage
- 減速機  
Gear reducer
- 十字轉向器  
Bevel gearbox
- 螺桿導軌外置  
Spindle axes external guide
- 螺桿導軌內置  
Spindle axes internal guide
- 同步帶  
Toothed belt axes
- 基本型  
Standard
- 導軌加強型  
Advance guide



### AIMS 40 - 400 - 2010 - D - M400 - S3

螺桿式 Spindle Axes    缸徑 Size (mm)    行程 Stroke (mm)    規格 Ball Screw Size (mm)    馬達安裝位置 Motor Position    馬達功率 Motor Power (W)    開關數 Number of Sensors

直徑 Φ	導程 Pitch	D 直接安裝 Direct	M 三菱 Mitsubishi	T 台達 Delta	S3 3個開關 3x Sensors
20	10	P 間接安裝 Parallel	P 松下 Panasonic	O 其他 Others	Sn n個開關 nx Sensors
16	20		Y 安川 Yokawa		
200 / 400 / 750					

● 有選項 Optional    ● 無選項 No options

馬達輸出 Motor Power (W)	200 / 400 / 750		
額定扭矩 Torque (Nm)	0.64 / 1.27 / 2.39		
螺桿等級 Ball Screw Level	C7轉造 / C5研磨 C7 Rolled Ball Screw / C5 Ground Ball Screw		
重複定位精度 Rep. Accuracy (mm)	±0.02 / ±0.01		
螺桿規格 Ball Screw Size (mm)	Ø20	10	
	Ø16		20
額定推力 Nominal Thrust (N)	200 (W)	340	170
	400 (W)	690	340
	750 (W)	1280	690
最高速度 Max. Speed (mm/s)	500      1000		
行程範圍 Stroke Range (mm)	200...1500 / 100 間隔 Pitch		
最大負載值 Max. Load (Kg)	水平 Horizontal	-	
	側掛 Sidehang	-	
	垂直 Vertical	-	

力和力矩 Force and torques	F <sub>y</sub> (N)	-
	F <sub>z</sub> (N)	15
	M <sub>x</sub> (N.m)	4
	M <sub>y</sub> (N.m)	4
	M <sub>z</sub> (N.m)	4
面積二次矩 2nd moment of area	L <sub>xx</sub> (cm <sup>4</sup> )	67.3
	L <sub>yy</sub> (cm <sup>4</sup> )	74.8
0mm行程基本重量 Basic Weight for 0mm Stroke (kg)		4.62
每100mm行程增加重量 Additional Weight per 100mm Stroke (kg)		0.68
磁簧開關 Proximity Sensor	CS1-M-1M 觸點式1米 1m Contact Type	
	CS1-MN-3M 無觸點NPN型3米 1m Contactless NPN Transistor	
	CS1-MP-3M 無觸點PNP型3米 1m Contactless PNP Transistor	

以上負載力矩曲線，客戶選用之負載需在我司產品最大負載範圍內 Above load torque curve, the loading should be within the maximum load range

S

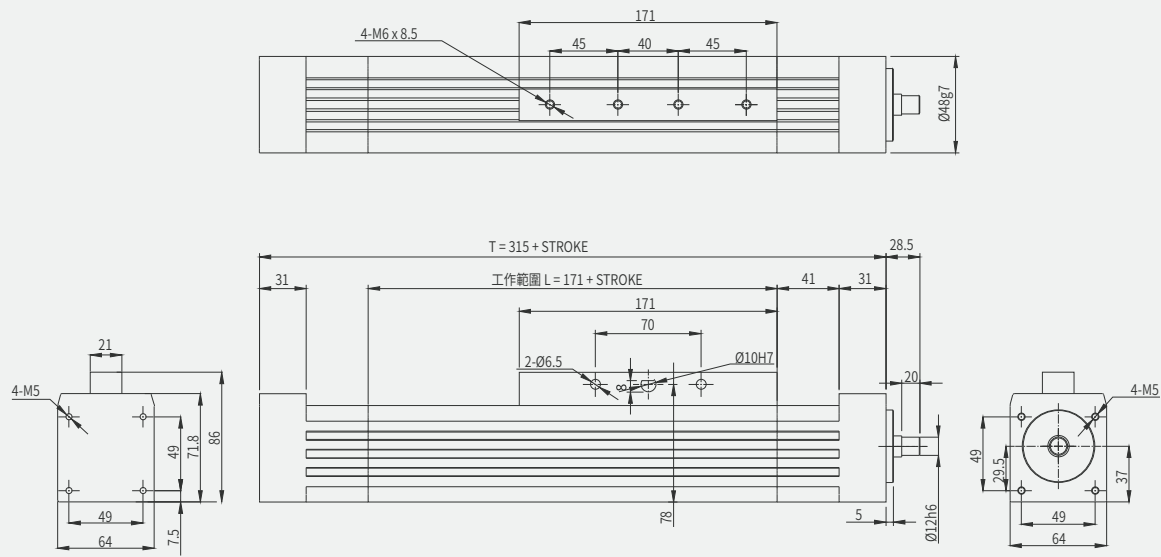
25

40



**AIMS40 基本型 standard**

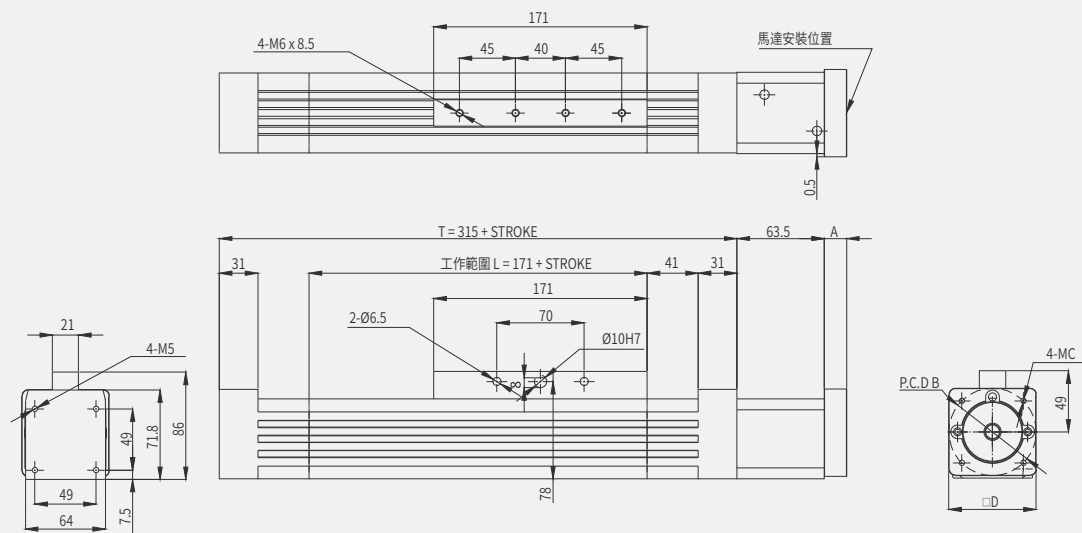
單位 Unit: mm



本圖面僅供參考用途，實際尺寸皆以實際提供之2D/3D圖紙為準 This drawing is for reference only. The actual dimensions are based on the actual 2D / 3D drawings provided.

**AIMS40-D 基本型直接安裝 motor direct installed**

單位 Unit: mm



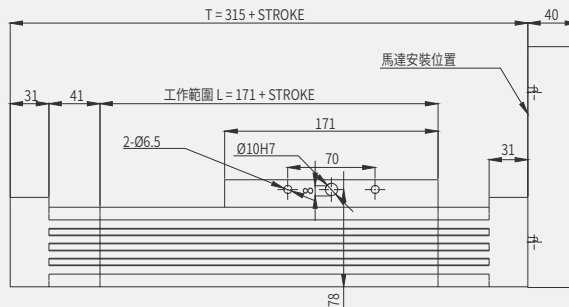
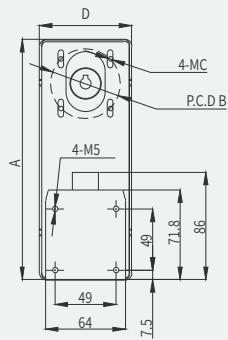
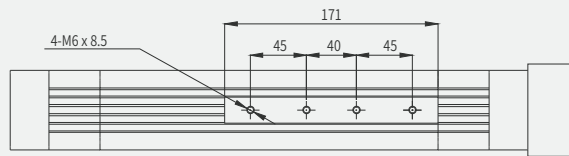
	A	B	C	D
400 W	11	70	M4 / M5	75
750 W	21	90	M5 / M6	80

本圖面僅供參考用途，實際尺寸皆以實際提供之2D/3D圖紙為準 This drawing is for reference only. The actual dimensions are based on the actual 2D / 3D drawings provided.

- 日規電缸滑台  
Linear actuator
- 歐規電缸滑台  
EU linear actuator
- 超長型電缸滑台  
Super length linear actuator
- 活塞杆電動缸  
Cylinder actuator
- 旋轉台  
Rotary stage
- 精密對位平台  
Precision alignment stage
- 減速機  
Gear reducer
- 十字轉向器  
Bevel gearbox
- 螺桿導軌外置  
Sprocket axes external guide
- 螺桿導軌內置  
Sprocket axes internal guide
- 同步帶  
Toothed belt axis
- 基本型  
Standard
- 導軌加強型  
Advance guide

AIMS40-P 基本型間接安裝 motor parallel installed

單位 Unit: mm

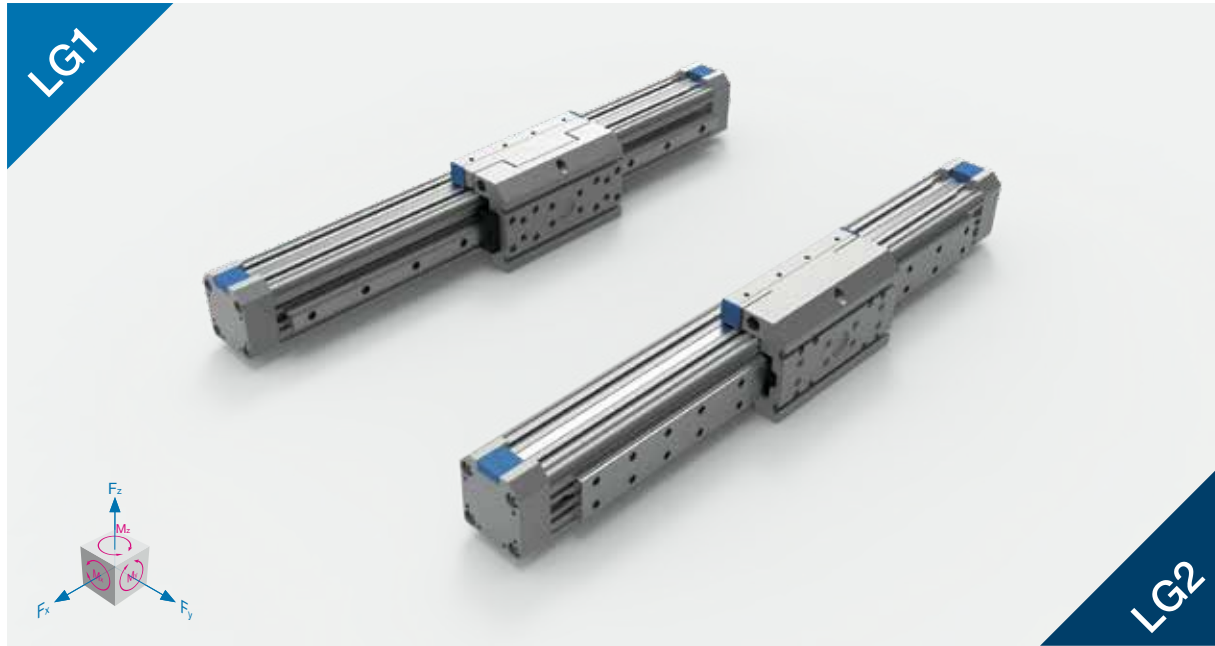


	A	B	C	D
400 W	196	70	M4, M5	74
750 W	204	90	M5, M6	84

本圖面僅供參考用途，實際尺寸皆以實際提供之2D/3D圖紙為準 This drawing is for reference only. The actual dimensions are based on the actual 2D / 3D drawings provided.

# 歐規螺桿導軌外置電缸滑台

EU. SPINDLE AXES EXTERNAL GUIDE LINEAR ACTUATOR



- 日規電缸滑台  
Linear actuator
- 歐規電缸滑台  
EU linear actuator
- 超長型電缸滑台  
Super length linear actuator
- 活塞杆電動缸  
Cylinder actuator
- 旋轉台  
Rotary stage
- 精密對位平台  
Precision alignment stage
- 減速機  
Gear reducer
- 十字轉向器  
Bevel gearbox
- 螺桿導軌外置  
Spindle axes external guide
- 螺桿導軌內置  
Spindle axes internal guide
- 同步帶  
Toothed belt axis
- 基本型  
Standard
- 導軌加強型  
Advance guide

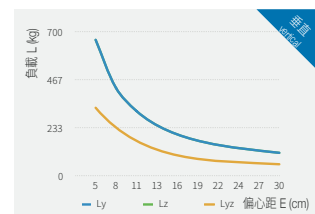
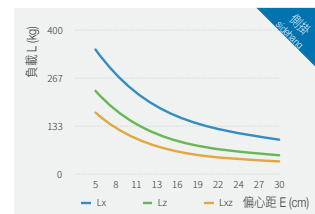
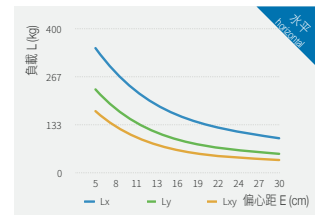
## AIMS 40 - 400 - 2010 - LG1 - SF - SS1 - D - M400 - S3

螺桿式 Spindle Axes	缸徑 Size (mm)	行程 Stroke (mm)	規格 Ball Screw Size (mm)	導軌 Guide Type	導軌位置 Guide Position	加強型滑座數量 Number of Slide	馬達安裝位置 Motor Position	馬達功率 Motor Power (W)	開關數 Number of Sensors
			直徑 $\Phi$ / 導程 Pitch	LG1 高軌 High Guide LG2 寬軌 Wide Guide	SF 前置 Front SB 後置 Back	SS1 1個滑座 1x Slide SSn n個滑座 nx Slides	D 直接安裝 Direct P 間接安裝 Parallel	M 三菱 Mitsubishi T 台達 Delta P 松下 Panasonic O 其他 Others Y 安川 Yaskawa	S3 3個開關 3x Sensors Sn n個開關 nx Sensors
									200 / 400 / 750

● 有選項 Optional    ● 無選項 No options

馬達輸出 Motor Power (W)	200 / 400 / 750		
額定扭矩 Torque (Nm)	0.64 / 1.27 / 2.39		
螺桿等級 Ball Screw Level	C7轉造 / C5研磨 C7 Rolled Ball Screw / C5 Ground Ball Screw		
重複定位精度 Rep. Accuracy (mm)	$\pm 0.02$ / $\pm 0.01$		
螺桿規格 Ball Screw Size (mm)	$\Phi 20$	10	
	$\Phi 16$		20
額定推力 Nominal Thrust (N)	200 (W)	340	170
	400 (W)	690	340
	750 (W)	1280	690
最高速度 Max. Speed (mm/s)	500		1000
行程範圍 Stroke Range (mm)	200...1500 / 100 間隔 Pitch		
最大負載值 Max. Load (Kg)	水平 Horizontal	20 / 30 / 40	
	側掛 Sidehang	10 / 15 / 20	
	垂直 Vertical	8 / 10 / 12	

力和力矩 Force and torques	$F_y$ (N)	7300
	$F_z$ (N)	7300
	$M_x$ (N.m)	170
	$M_y$ (N.m)	330
	$M_z$ (N.m)	330
面積二次矩 2nd moment of area	$L_{xx}$ (cm <sup>2</sup> )	190.8
	$L_{yy}$ (cm <sup>2</sup> )	87.5
0mm行程基本重量 Basic Weight for 0mm Stroke (kg)	6.29	
每100mm行程增加重量 Additional Weight per 100mm Stroke (kg)	1.05	
磁簧開關 Proximity Sensor	CS1-M-1M 觸點式1米 1m Contact Type	
	CS1-MN-3M 無觸點NPN型3米 3m Contactless NPN Transistor	
	CS1-MP-3M 無觸點PNP型3米 3m Contactless PNP Transistor	

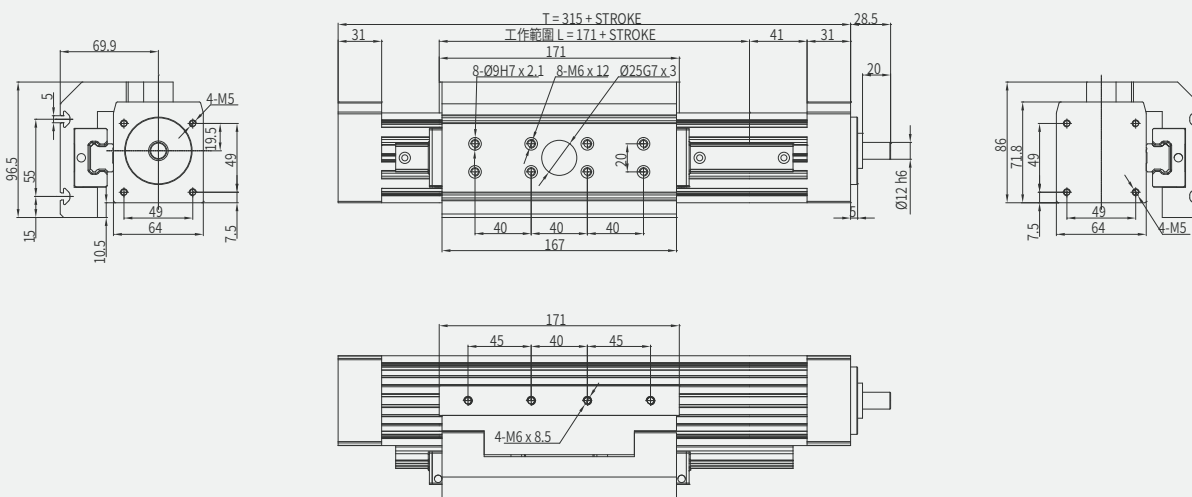


以上負載力矩曲線，客戶選用之負載需在我司產品最大負載範圍內 Above load torque curve, the loading should be within the maximum load range

S  
25  
40

AIMS40-LG1-SF 高軌前置基本型 front high guide standard

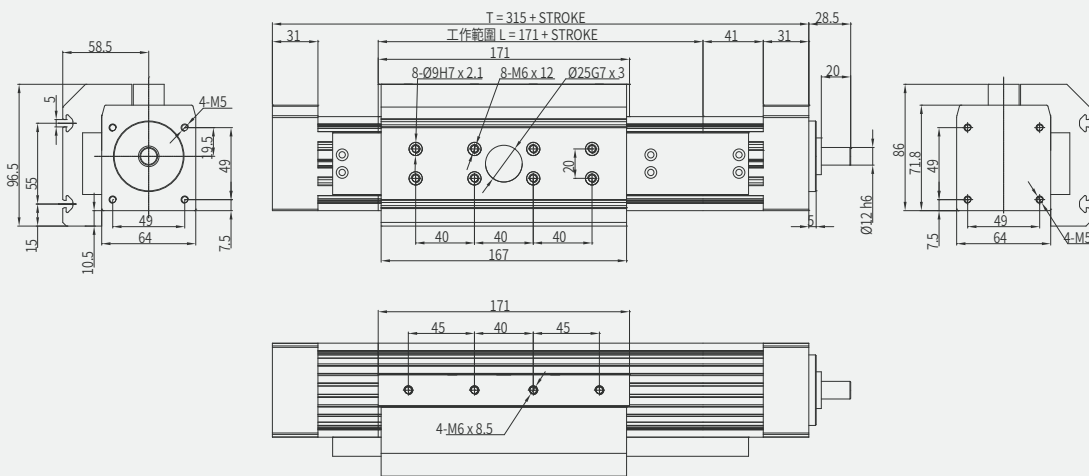
單位 Unit: mm



本圖面僅供參考用途，實際尺寸皆以實際提供之2D/3D圖紙為準 This drawing is for reference only. The actual dimensions are based on the actual 2D / 3D drawings provided.

AIMS40-LG2-SF 寬軌前置基本型 front wide guide standard

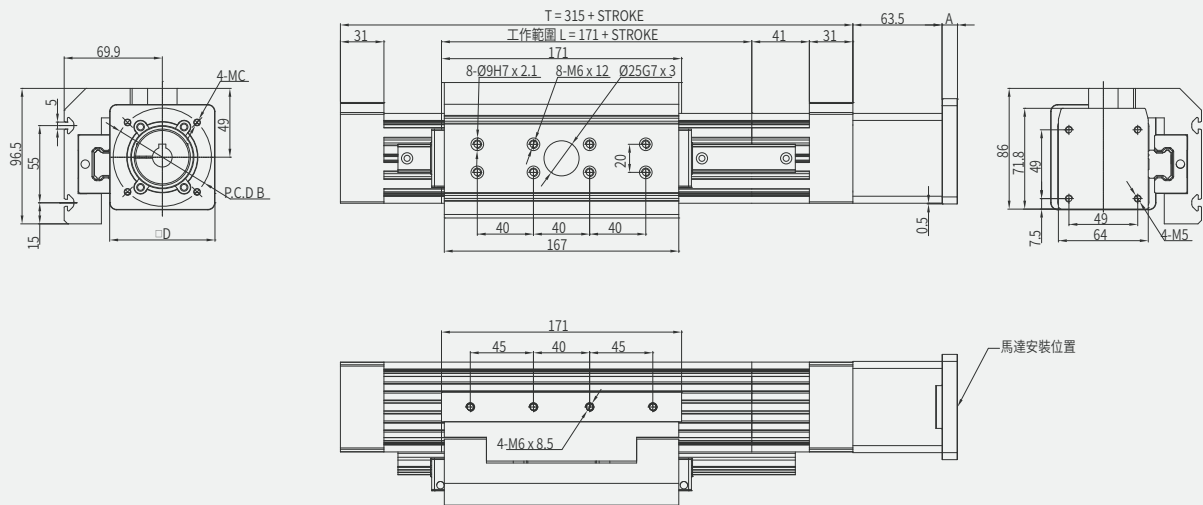
單位 Unit: mm



本圖面僅供參考用途，實際尺寸皆以實際提供之2D/3D圖紙為準 This drawing is for reference only. The actual dimensions are based on the actual 2D / 3D drawings provided.

AIMS40-LG1-SF-D 高軌前置直接安裝 front high guide motor direct installed

單位 Unit: mm

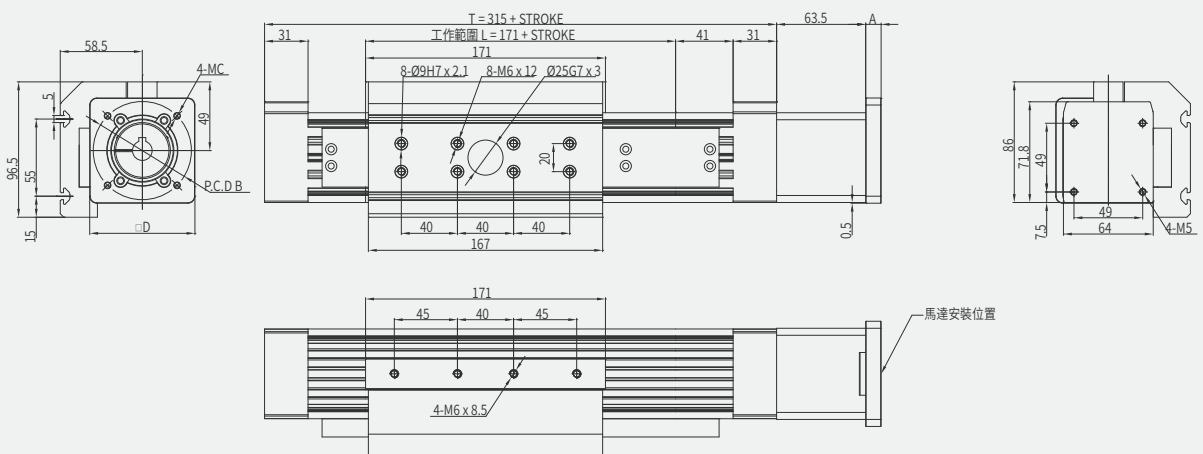


	A	B	C	D
400 W	11	70	M4 / M5	75
750 W	21	90	M5 / M6	80

本圖面僅供參考用途，實際尺寸皆以實際提供之2D/3D圖紙為準 This drawing is for reference only. The actual dimensions are based on the actual 2D / 3D drawings provided.

AIMS40-LG2-SF-D 寬軌前置直接安裝 front wide guide motor direct installed

單位 Unit: mm



	A	B	C	D
400 W	11	70	M4 / M5	75
750 W	21	90	M5 / M6	80

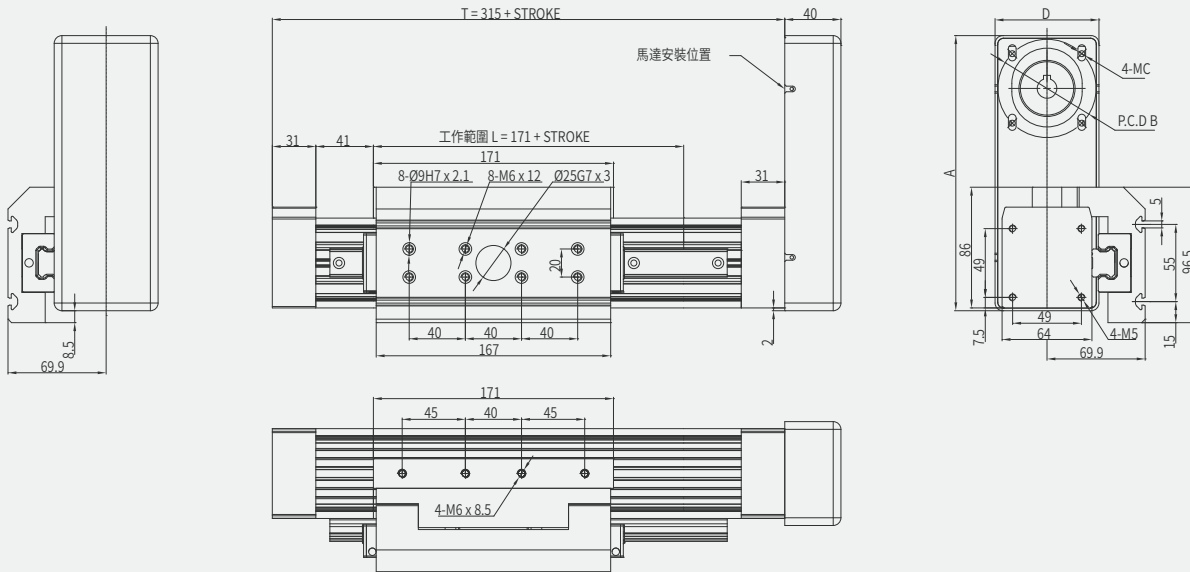
本圖面僅供參考用途，實際尺寸皆以實際提供之2D/3D圖紙為準 This drawing is for reference only. The actual dimensions are based on the actual 2D / 3D drawings provided.

- 日規電缸滑台  
Linear actuator
- 歐規電缸滑台  
EU linear actuator
- 超長型電缸滑台  
Super length linear actuator
- 活塞杆電動缸  
Cylinder actuator
- 旋轉台  
Rotary stage
- 精密對位平台  
Precision alignment stage
- 減速機  
Gear reducer
- 十字轉向器  
Bevel gearbox
- 螺桿導軌外置  
Spline axes external guide
- 螺桿導軌內置  
Spline axes internal guide
- 同步帶  
Toothed belt axis
- 基本型  
Standard
- 導軌加強型  
Advance guide

- S
- 25
- 40

AIMS40-LG1-SF-P 高軌前置間接安裝 front high guide motor parallel installed

單位 Unit: mm

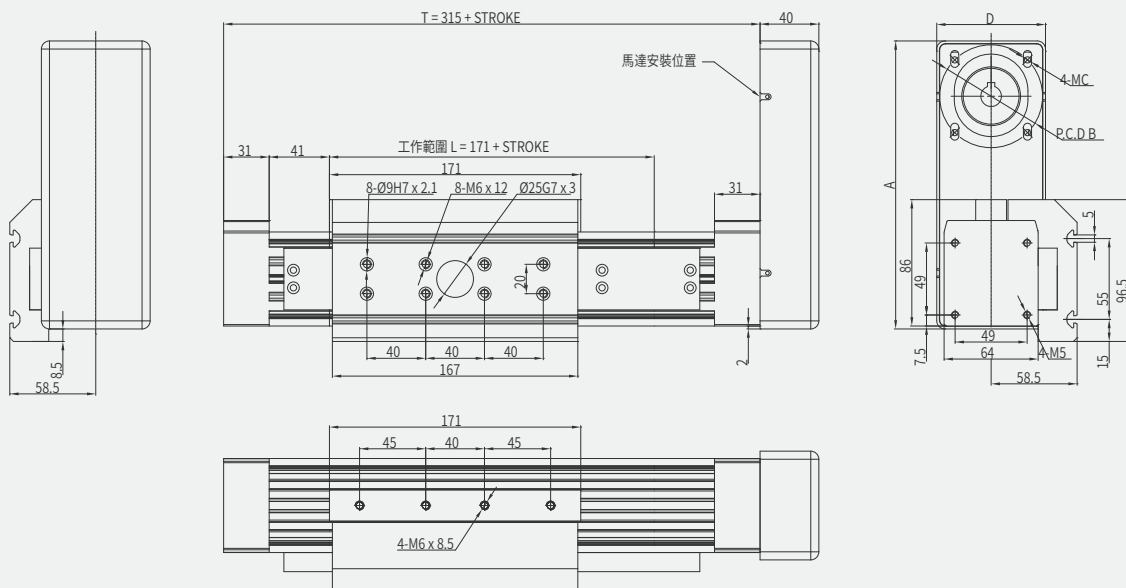


	A	B	C	D
400 W	196	70	M4 / M5	74
750 W	204	90	M5 / M6	84

本圖面僅供參考用途，實際尺寸皆以實際提供之2D/3D圖紙為準 This drawing is for reference only. The actual dimensions are based on the actual 2D / 3D drawings provided.

AIMS40-LG2-SF-P 寬軌前置間接安裝 front wide guide motor parallel installed

單位 Unit: mm

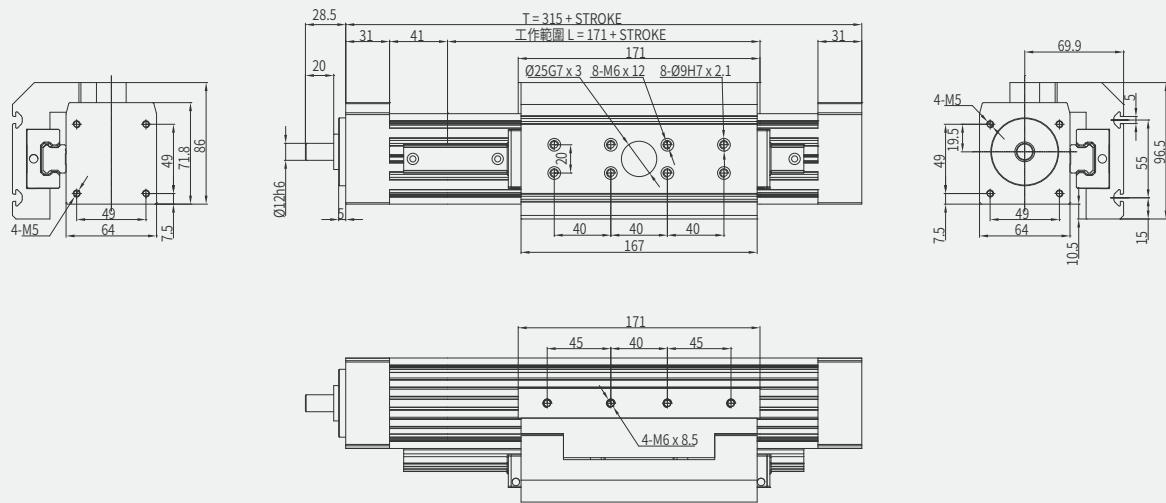


	A	B	C	D
400 W	196	70	M4 / M5	74
750 W	204	90	M5 / M6	84

本圖面僅供參考用途，實際尺寸皆以實際提供之2D/3D圖紙為準 This drawing is for reference only. The actual dimensions are based on the actual 2D / 3D drawings provided.

AIMS40-LG1-SB 高軌後置基本型 rear high guide standard

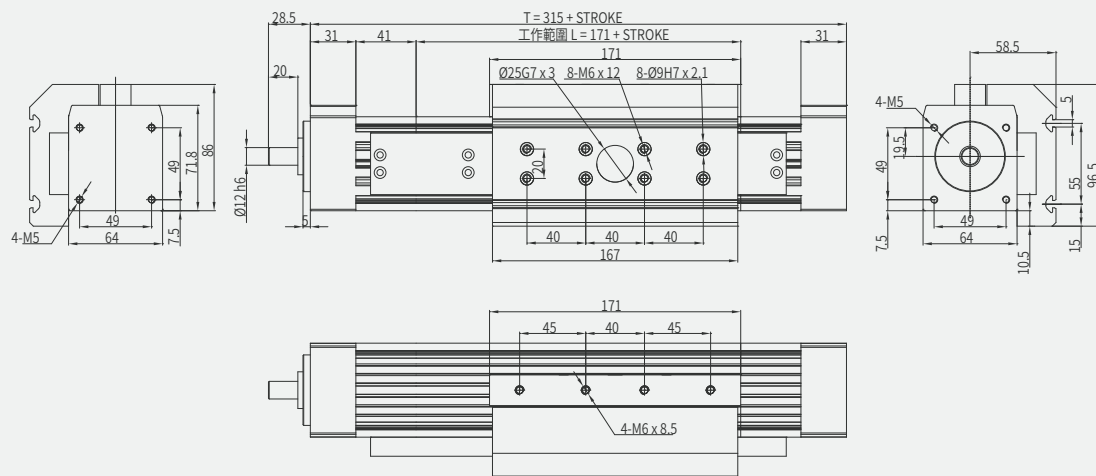
單位 Unit: mm



本圖面僅供參考用途，實際尺寸皆以實際提供之2D/3D圖紙為準 This drawing is for reference only. The actual dimensions are based on the actual 2D / 3D drawings provided.

AIMS40-LG2-SB 寬軌後置基本型 rear wide guide standard

單位 Unit: mm



本圖面僅供參考用途，實際尺寸皆以實際提供之2D/3D圖紙為準 This drawing is for reference only. The actual dimensions are based on the actual 2D / 3D drawings provided.

- 日規電缸滑台  
Linear actuator
- 歐規電缸滑台  
EU linear actuator
- 超長型電缸滑台  
Super length linear actuator
- 活塞杆電動缸  
Cylinder actuator
- 旋轉台  
Rotary stage
- 精密對位平台  
Precision alignment stage
- 減速機  
Gear reducer
- 十字轉向器  
Bevel gearbox
- 螺桿導軌外置  
Spline axes external guide
- 螺桿導軌內置  
Spline axes internal guide
- 同步帶  
Toothed belt axes
- 基本型  
Standard
- 導軌加強型  
Advance guide

S

25

40

日規電缸滑台  
JP linear actuator

歐規電缸滑台  
EU linear actuator

超長型電缸滑台  
Super length linear actuator

活桿電缸  
Cylinder actuator

旋轉台  
Rotary stage

精密對位平台  
Precision alignment stage

減速機  
Gear reducer

十字轉向器  
Bevel gearbox

螺桿導軌外置  
Spindle axes external guide

螺桿導軌內置  
Spindle axes internal guide

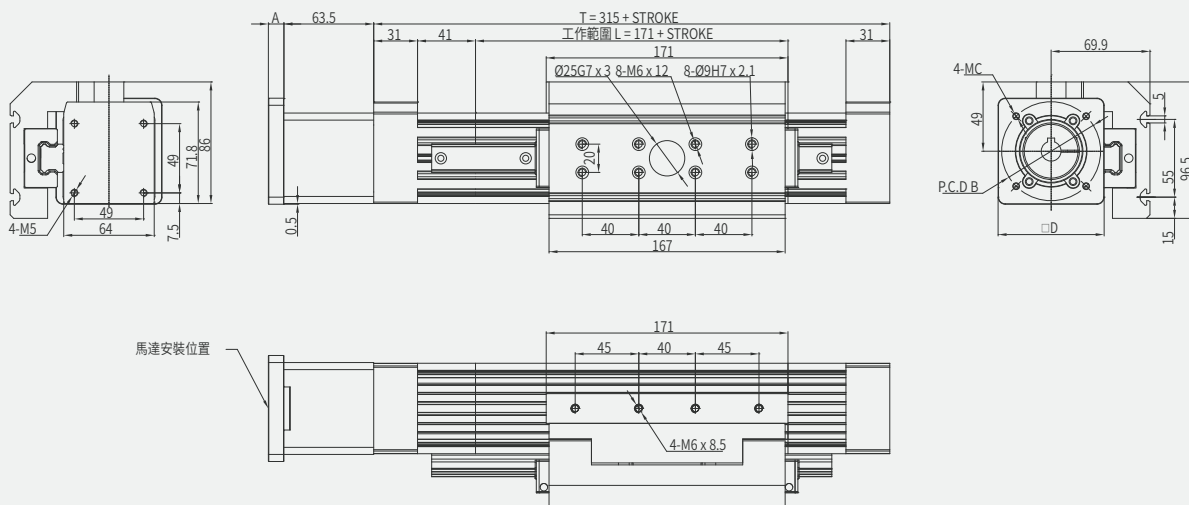
同步帶  
Toothed belt axes

基本型  
Standard

導軌加強型  
Advance guide

AIMS40-LG1-SB-D 高軌後置直接安裝 rear high guide motor direct installed

單位 Unit: mm

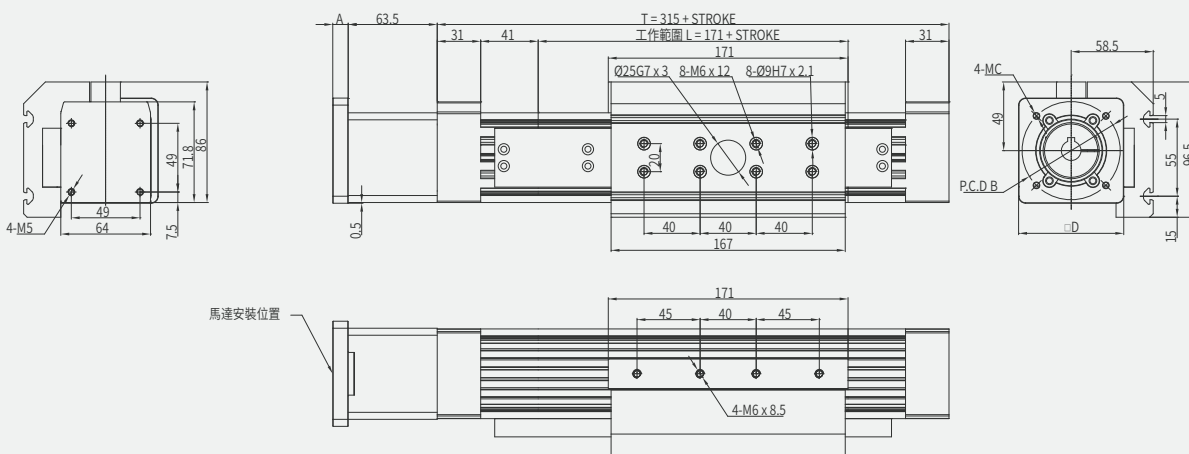


	A	B	C	D
400 W	11	70	M4 / M5	75
750 W	21	90	M5 / M6	80

本圖面僅供參考用途，實際尺寸皆以實際提供之2D/3D圖紙為準 This drawing is for reference only. The actual dimensions are based on the actual 2D / 3D drawings provided.

AIMS40-LG2-SB-D 寬軌後置直接安裝 rear wide guide motor direct installed

單位 Unit: mm



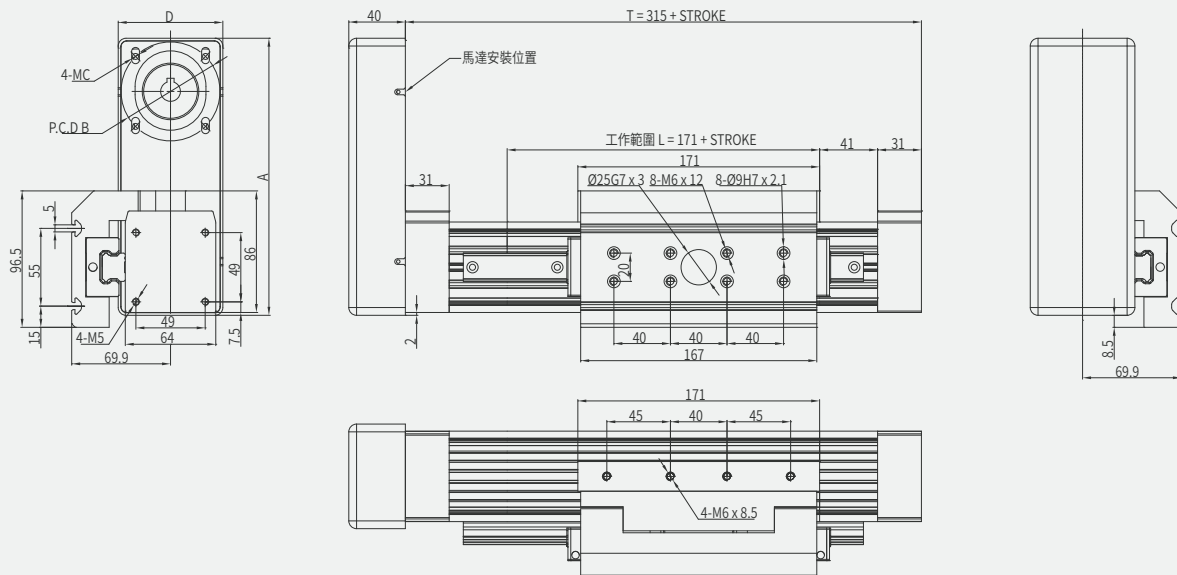
	A	B	C	D
400 W	11	70	M4 / M5	75
750 W	21	90	M5 / M6	80

本圖面僅供參考用途，實際尺寸皆以實際提供之2D/3D圖紙為準 This drawing is for reference only. The actual dimensions are based on the actual 2D / 3D drawings provided.



AIMS40-LG1-SB-P 高軌後置間接安裝 rear high guide motor parallel installed

單位 Unit: mm



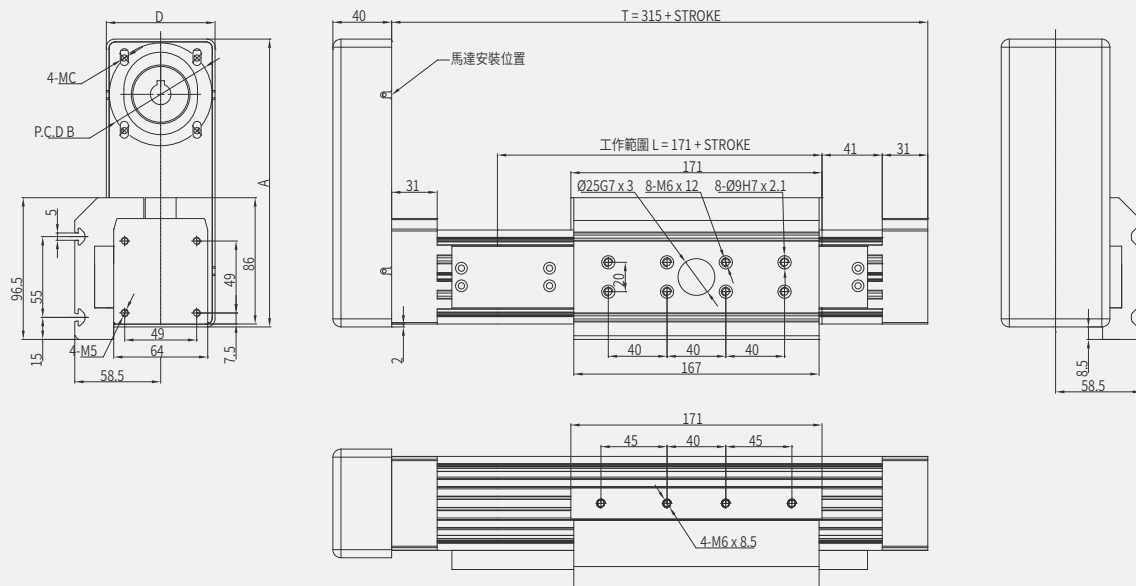
	A	B	C	D
400 W	196	70	M4 / M5	74
750 W	204	90	M5 / M6	84

本圖面僅供參考用途，實際尺寸皆以實際提供之2D/3D圖紙為準 This drawing is for reference only. The actual dimensions are based on the actual 2D / 3D drawings provided.

- 日規電缸滑台  
Linear actuator
- 歐規電缸滑台  
EU linear actuator
- 超長型電缸滑台  
Super length linear actuator
- 活塞杆電動缸  
Cylinder actuator
- 旋轉台  
Rotary stage
- 精密對位平台  
Precision alignment stage
- 減速機  
Gear reducer
- 十字轉向器  
Bevel gearbox
- 螺桿導軌外置  
Sprocket axes external guide
- 螺桿導軌內置  
Sprocket axes internal guide
- 同步帶  
Toothed belt axis
- 基本型  
Standard
- 導軌加強型  
Advance guide

AIMS40-LG2-SB-P 寬軌後置間接安裝 rear wide guide motor parallel installed

單位 Unit: mm



	A	B	C	D
400 W	196	70	M4 / M5	74
750 W	204	90	M5 / M6	84

本圖面僅供參考用途，實際尺寸皆以實際提供之2D/3D圖紙為準 This drawing is for reference only. The actual dimensions are based on the actual 2D / 3D drawings provided.

- S
- 25
- 40

日規電缸滑台 JP linear actuator
歐規電缸滑台 EU linear actuator
超長型電缸滑台 Super length linear actuator
活塞杆電動缸 Cylinder actuator
旋轉台 Rotary stage
精密對位平台 Precision alignment stage
減速機 Gear reducer
十字轉向器 Bevel gearbox
螺桿導軌外置 Spindle axes external guide
螺桿導軌內置 Spindle axes internal guide
同步帶 Toothed belt axes
基本型 Standard
導軌加強型 Advance guide



S

25

40