

# 歐規螺桿 導軌內置式 直線電缸滑台

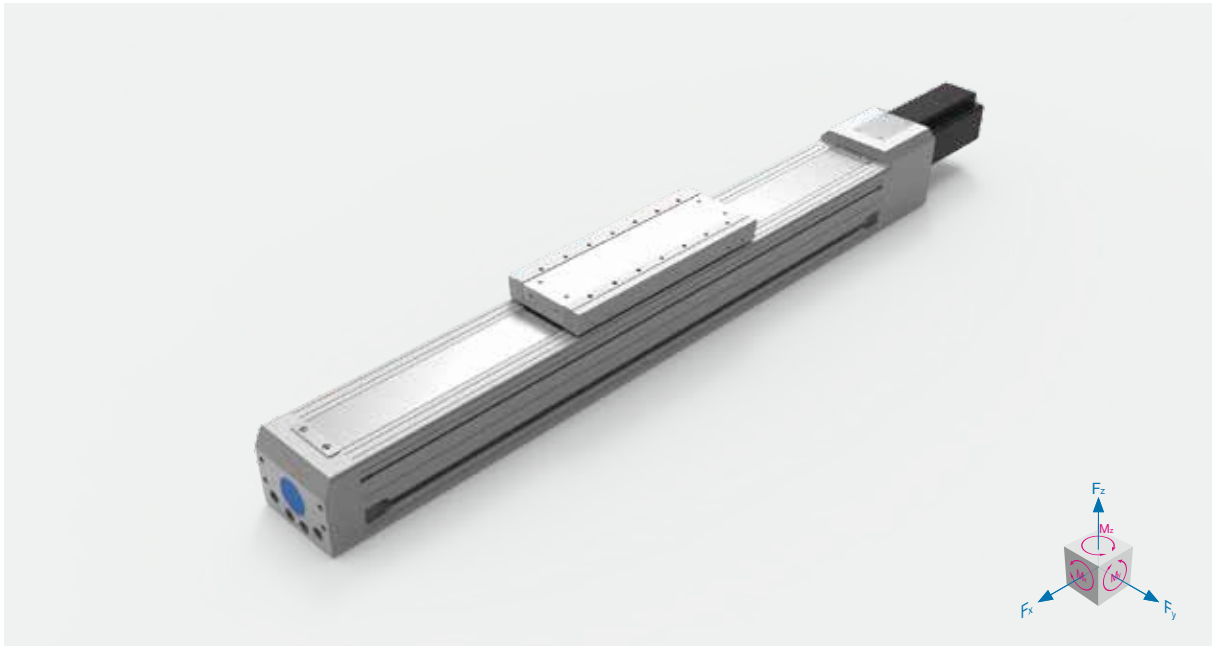
EU. SPINDLE AXES  
INTERNAL GUIDE  
LINEAR ACTUATOR



# 歐規螺桿導軌內置電缸滑台

EU. SPINDLE AXES INTERNAL GUIDE LINEAR ACTUATOR

- 日規電缸滑台  
JP linear actuator
- 歐規電缸滑台  
EU linear actuator
- 超長型電缸滑台  
Super length linear actuator
- 活塞杆電動缸  
Cylinder actuator
- 旋轉台  
Rotary stage
- 精密對位平台  
Precision alignment stage
- 減速機  
Gear reducer
- 十字轉向器  
Bevel gearbox
- 螺桿導軌外置  
Spindle axes external guide
- 螺桿導軌內置  
Spindle axes internal guide
- 同步帶  
Toothed belt axes



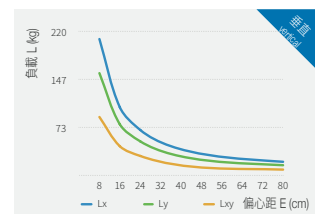
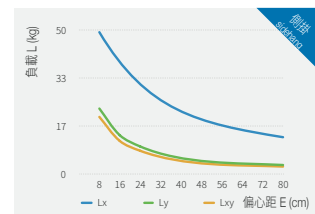
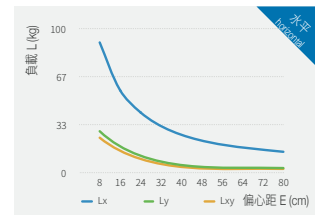
## AIMS 60i - 200 - 1210 - D - M400 - O - S3

螺桿導軌外置 Spindle Axes External Guide	缸徑 Size (mm)	行程 Stroke (mm)	規格 Ball Screw Size (mm)	馬達安裝位置 Motor Position	馬達功率 Motor Power (W)	光電開關 Optical Proximity Sensor Position	開關數 Number of Sensors
	12	10	直徑 Φ 12 導程 Pitch 10	D 直接安裝 Direct FP 前側間接 Frontside Parallel BP 後側間接 Backside Parallel UP 下側間接 Underneath Parallel	M 三菱 Mitsubishi T 台達 Delta P 松下 Panasonic Y 安川 Yokawa 400	無 None O 外掛 Hang Outside	S3 3 個開關 3x Sensors Sn n 個開關 nx Sensors

● 有選項 Optional    ● 無選項 No options

馬達輸出 Motor Power (W)	400
額定扭矩 Torque (Nm)	1.27
螺桿等級 Ball Screw Level	C7 軋制 / C5 研磨 C7 Rolled Ball Screw / C5 Ground Ball Screw
重複定位精度 Rep. Accuracy (mm)	±0.01 / ±0.005
螺桿規格 Ball Screw Size (mm)	Ø12 10
額定推力 Nominal Thrust (N)	400 (W) 680
最高速度 Max. Speed (mm/s)	500
行程範圍 Stroke Range (mm)	Ø12 100...1000 / 100 間隔 Pitch
	水平 Horizontal 25
最大負載值 Max. Load (Kg)	側掛 Sidehang 12
	垂直 Vertical 8

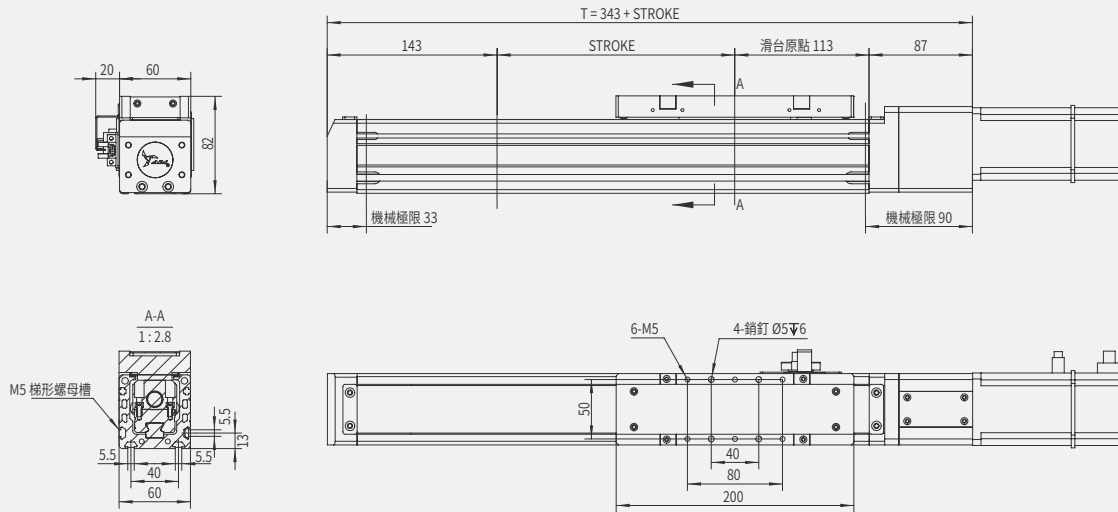
力和力矩 Force and torques	F <sub>y</sub> (N)	720
	F <sub>z</sub> (N)	2150
	M <sub>x</sub> (N.m)	20
	M <sub>y</sub> (N.m)	125
	M <sub>z</sub> (N.m)	125
面積二次矩 2nd moment of area	L <sub>xx</sub> (cm <sup>2</sup> )	45
	L <sub>yy</sub> (cm <sup>2</sup> )	60
0mm行程基本重量 Basic Weight for 0mm Stroke (kg)		4
每100mm行程增加重量 Additional Weight per 100mm Stroke (kg)		0.57
磁簧開關 Proximity Sensor	CS1-M-1M 觸點式1米 1m Contact Type	
	CS1-MN-3M 無觸點NPN型3米 3m Contactless NPN Transistor	
	CS1-MP-3M 無觸點PNP型3米 3m Contactless PNP Transistor	



以上負載力矩曲線，客戶選用之負載需在我司產品最大負載範圍內 Above load torque curve, the loading should be within the maximum load range

AIMS60i-D 直接安裝 motor direct installed

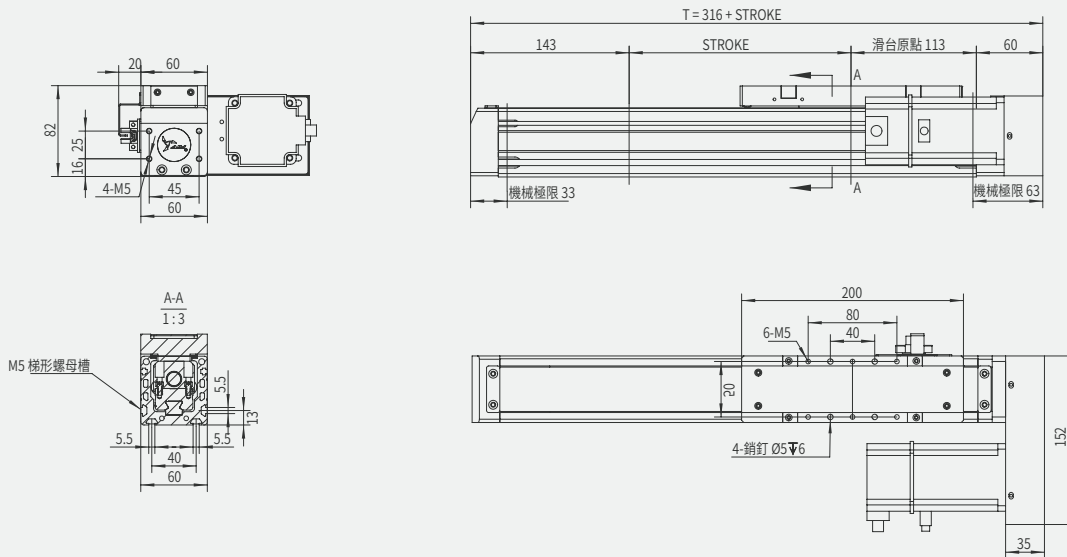
單位 Unit: mm



本圖面僅供參考用途，實際尺寸皆以實際提供之2D/3D圖紙為準 This drawing is for reference only. The actual dimensions are based on the actual 2D / 3D drawings provided.

AIMS60i-FP 前側間接安裝 motor frontside parallel installed

單位 Unit: mm



本圖面僅供參考用途，實際尺寸皆以實際提供之2D/3D圖紙為準 This drawing is for reference only. The actual dimensions are based on the actual 2D / 3D drawings provided.

- 日規電缸滑台  
J linear actuator
- 歐規電缸滑台  
EU linear actuator
- 超長型電缸滑台  
Super length linear actuator
- 活塞杆電動缸  
Cylinder actuator
- 旋轉台  
Rotary stage
- 精密對位平台  
Precision alignment stage
- 減速機  
Gear reducer
- 十字轉向器  
Bevel gearbox
- 螺桿導軌外置  
Sprocket axes external guide
- 螺桿導軌內置  
Sprocket axes internal guide
- 同步帶  
Toothed belt axis

S

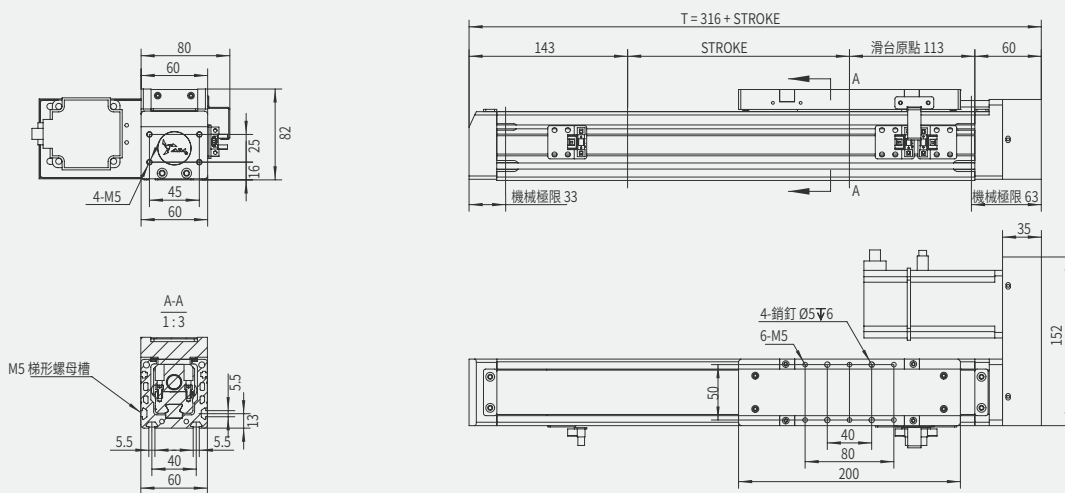
60i

80i

112i

AIMS60i-BP 後側間接安裝 motor backside parallel installed

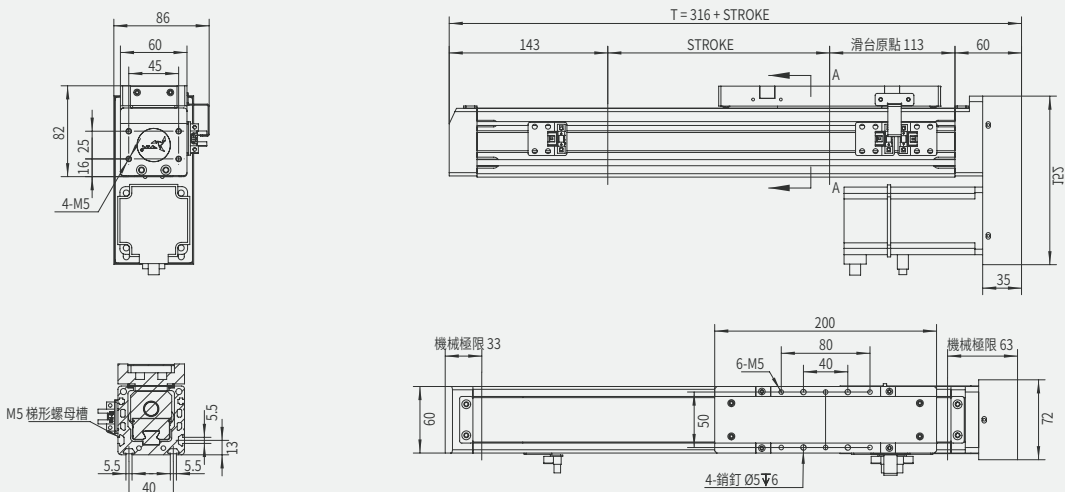
單位 Unit: mm



本圖面僅供參考用途，實際尺寸皆以實際提供之2D/3D圖紙為準 This drawing is for reference only. The actual dimensions are based on the actual 2D / 3D drawings provided.

AIMS60i-UP 馬達下側間接安裝 motor underneath parallel installed

單位 Unit: mm



本圖面僅供參考用途，實際尺寸皆以實際提供之2D/3D圖紙為準 This drawing is for reference only. The actual dimensions are based on the actual 2D / 3D drawings provided.

S

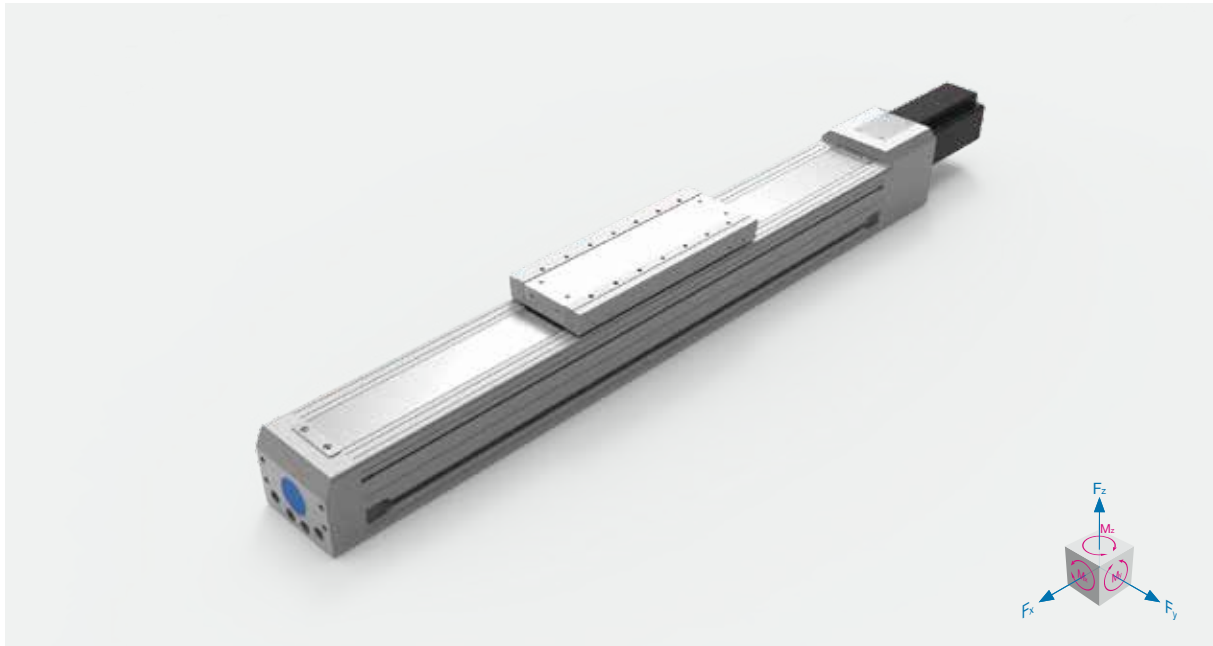
60i

80i

112i

# 歐規螺桿導軌內置電缸滑台

EU. SPINDLE AXES INTERNAL GUIDE LINEAR ACTUATOR



- 日規電缸滑台  
Linear actuator
- 歐規電缸滑台  
EU linear actuator
- 超長型電缸滑台  
Super length linear actuator
- 活塞杆電動缸  
Cylinder actuator
- 旋轉台  
Rotary stage
- 精密對位平台  
Precision alignment stage
- 減速機  
Gear reducer
- 十字轉向器  
Bevel gearbox
- 螺桿導軌外置  
Spindle axes external guide
- 螺桿導軌內置  
Spindle axes internal guide
- 同步帶  
Toothed belt axis

## AIMS 80i - 200 - 2020 - D - M750 - O - S3

螺桿導軌外置 Spindle Axes External Guide	缸徑 Size (mm)	行程 Stroke (mm)	規格 Ball Screw Size (mm)	馬達安裝位置 Motor Position	馬達功率 Motor Power (W)	光電開關 Optical Proximity Sensor Position	開關數 Number of Sensors
	20	2020	20	D 直接安裝 Direct	750	O 外掛 Hang Outside	S3 3個開關 3x Sensors

● 有選項 Optional    ● 無選項 No options

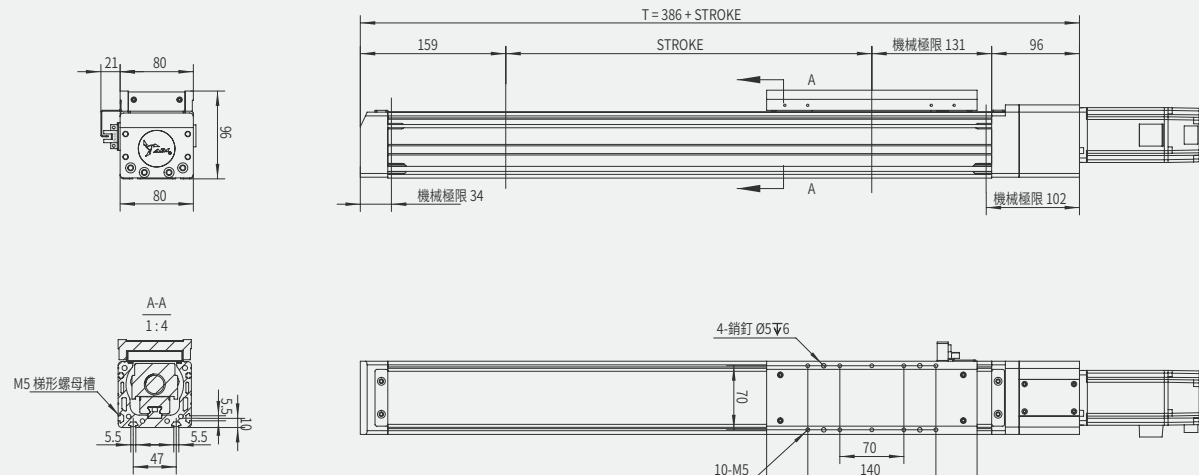
馬達輸出 Motor Power (W)	750	力和力矩 Force and torques	F <sub>y</sub> (N)	950	水平 Horizontal
額定扭矩 Torque (Nm)	2.39		F <sub>z</sub> (N)	2650	側掛 Sidehang
螺桿等級 Ball Screw Level	C7 軋制 / C5 研磨 C7 Rolled Ball Screw / C5 Ground Ball Screw		M <sub>x</sub> (N.m)	36	
重複定位精度 Rep. Accuracy (mm)	±0.01 / ±0.005		M <sub>y</sub> (N.m)	207	垂直 Vertical
螺桿規格 Ball Screw Size (mm)	Ø20		M <sub>z</sub> (N.m)	207	
額定推力 Nominal Thrust (N)	400 (W)		L <sub>xx</sub> (cm <sup>2</sup> )	100	面積二次矩 2nd moment of area
最高速度 Max. Speed (mm/s)	1000		L <sub>yy</sub> (cm <sup>2</sup> )	171	
行程範圍 Stroke Range (mm)	Ø12	100...1500 / 100 間隔 Pitch	0mm行程基本重量 Basic Weight for 0mm Stroke (kg)	8.5	磁簧開關 Proximity Sensor
	水平 Horizontal	50	每100mm行程增加重量 Additional Weight per 100mm Stroke (kg)	0.87	
最大負載值 Max. Load (Kg)	側掛 Sidehang	25	CS1-M-1M 觸點式1米 1m Contact Type		負載 L (kg) Load L (kg)
	垂直 Vertical	12	CS1-MN-3M 無觸點NPN型3米 3m Contactless NPN Transistor		
			CS1-MP-3M 無觸點PNP型3米 3m Contactless PNP Transistor		

以上負載力矩曲線，客戶選用之負載需在我司產品最大負載範圍內 Above load torque curve, the loading should be within the maximum load range

- S
- 60i
- 80i
- 112i

AIMS80i-D 直接安裝 motor direct installed

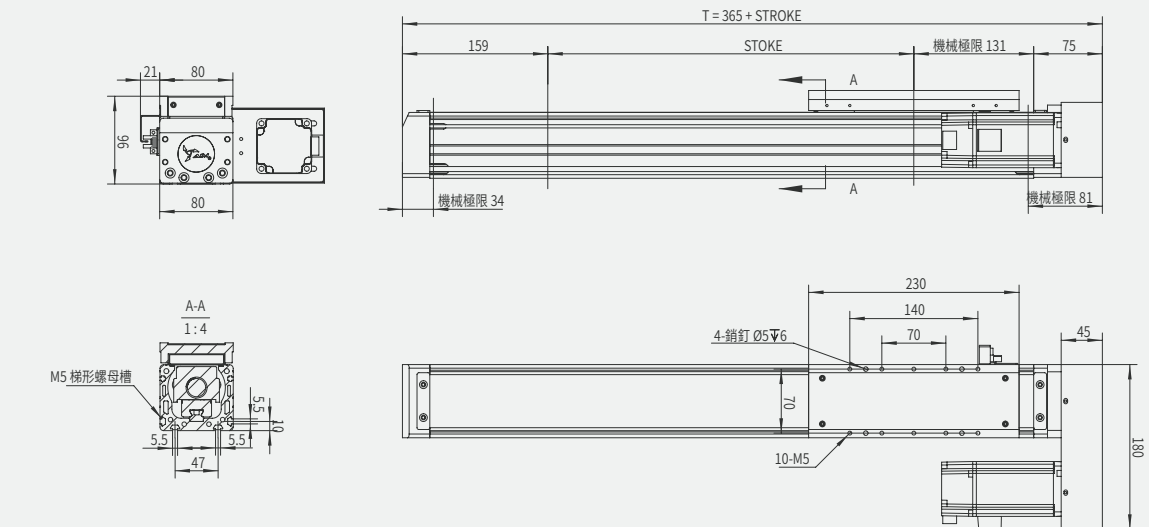
單位 Unit: mm



本圖面僅供參考用途，實際尺寸皆以實際提供之2D/3D圖紙為準 This drawing is for reference only. The actual dimensions are based on the actual 2D / 3D drawings provided.

AIMS80i-FP 前側間接安裝 motor frontside parallel installed

單位 Unit: mm



本圖面僅供參考用途，實際尺寸皆以實際提供之2D/3D圖紙為準 This drawing is for reference only. The actual dimensions are based on the actual 2D / 3D drawings provided.

S

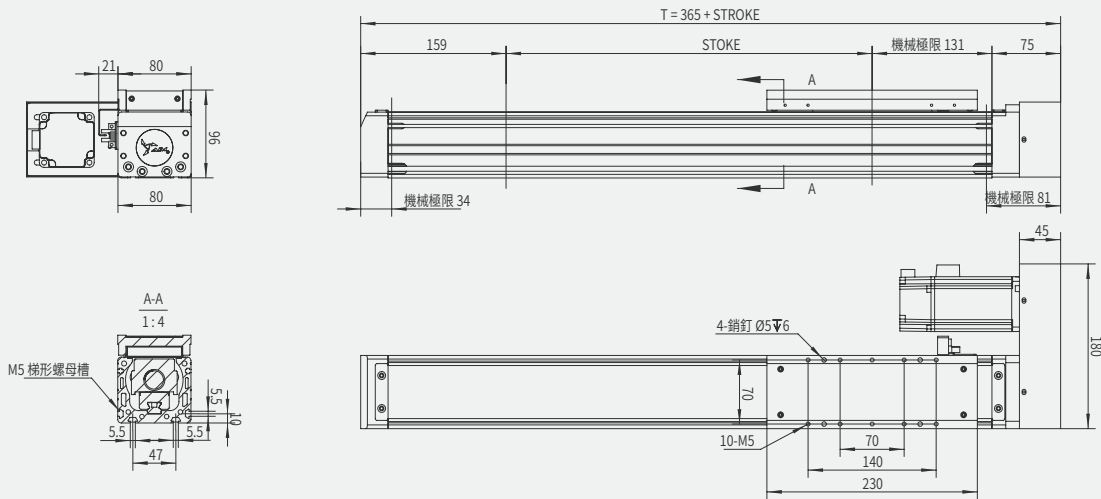
60i

80i

112i

AIMS80i-BP 後側間接安裝 motor backside parallel installed

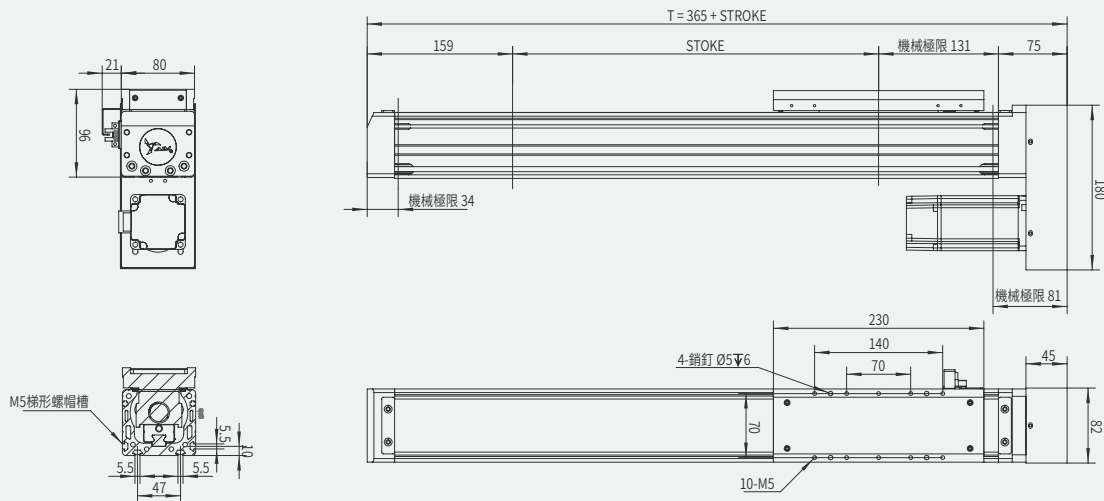
單位 Unit: mm



本圖面僅供參考用途，實際尺寸皆以實際提供之2D/3D圖紙為準 This drawing is for reference only. The actual dimensions are based on the actual 2D / 3D drawings provided.

AIMS80i-UP 馬達下側間接安裝 motor underneath parallel installed

單位 Unit: mm



本圖面僅供參考用途，實際尺寸皆以實際提供之2D/3D圖紙為準 This drawing is for reference only. The actual dimensions are based on the actual 2D / 3D drawings provided.

- 日規電缸滑台  
Linear actuator
- 歐規電缸滑台  
EU linear actuator
- 超長型電缸滑台  
Super length linear actuator
- 活塞杆電動缸  
Cylinder actuator
- 旋轉台  
Rotary stage
- 精密對位平台  
Precision alignment stage
- 減速機  
Gear reducer
- 十字轉向器  
Bevel gearbox
- 螺桿導軌外置  
Spiral axes external guide
- 螺桿導軌內置  
Spiral axes internal guide
- 同步帶  
Toothed belt axes

S

60i

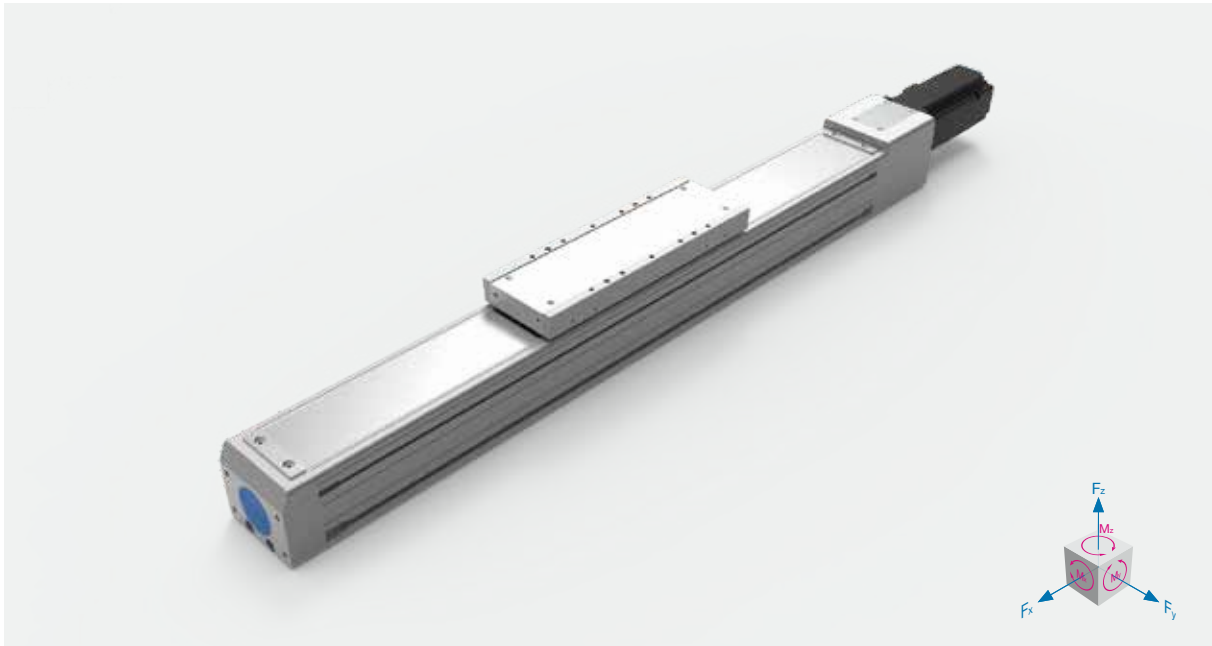
80i

112i

# 歐規螺桿導軌內置電缸滑台

## EU. SPINDLE AXES INTERNAL GUIDE LINEAR ACTUATOR

- 日規電缸滑台  
JP linear actuator
- 歐規電缸滑台  
EU linear actuator**
- 超長型電缸滑台  
Super length linear actuator
- 活桿電缸  
Cylinder actuator
- 旋轉台  
Rotary stage
- 精密對位平台  
Precision alignment stage
- 減速機  
Gear reducer
- 十字轉向器  
Bevel gearbox
- 螺桿導軌外置  
Spindle axes external guide
- 螺桿導軌內置  
Spindle axes internal guide**
- 同步帶  
Toothed belt axes



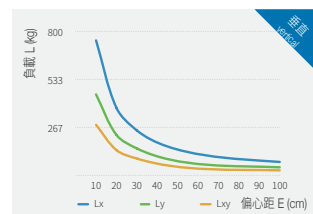
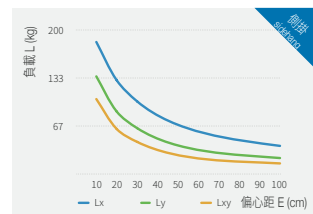
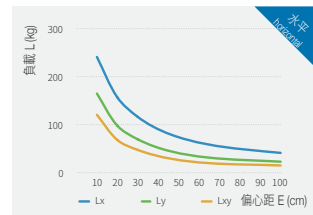
### AIMS 112i - 200 - 2525 - D - M750 - O - S3

螺桿導軌外置 Spindle Axes External Guide	缸徑 Size (mm)	行程 Stroke (mm)	規格 Ball Screw Size (mm)	馬達安裝位置 Motor Position	馬達功率 Motor Power (W)	光電開關 Optical Proximity Sensor Position	開關數 Number of Sensors																										
	25	25	直徑 Φ 25 導程 Pitch 25	<table border="1"> <tr><td>D</td><td>直接安裝 Direct</td></tr> <tr><td>FP</td><td>前側間接 Frontside Parallel</td></tr> <tr><td>BP</td><td>後側間接 Backside Parallel</td></tr> <tr><td>UP</td><td>下側間接 Underneath Parallel</td></tr> </table>	D	直接安裝 Direct	FP	前側間接 Frontside Parallel	BP	後側間接 Backside Parallel	UP	下側間接 Underneath Parallel	<table border="1"> <tr><td>M</td><td>三菱 Mitsubishi</td><td>T</td><td>台達 Delta</td></tr> <tr><td>P</td><td>松下 Panasonic</td><td>O</td><td>其他 Others</td></tr> <tr><td>Y</td><td>安川 Yokogawa</td><td></td><td></td></tr> </table>	M	三菱 Mitsubishi	T	台達 Delta	P	松下 Panasonic	O	其他 Others	Y	安川 Yokogawa			750	<table border="1"> <tr><td>無 None</td><td>S3</td><td>3 個開關 3x Sensors</td></tr> <tr><td>O 外掛 Hang Outside</td><td>Sn</td><td>n 個開關 nx Sensors</td></tr> </table>	無 None	S3	3 個開關 3x Sensors	O 外掛 Hang Outside	Sn	n 個開關 nx Sensors
D	直接安裝 Direct																																
FP	前側間接 Frontside Parallel																																
BP	後側間接 Backside Parallel																																
UP	下側間接 Underneath Parallel																																
M	三菱 Mitsubishi	T	台達 Delta																														
P	松下 Panasonic	O	其他 Others																														
Y	安川 Yokogawa																																
無 None	S3	3 個開關 3x Sensors																															
O 外掛 Hang Outside	Sn	n 個開關 nx Sensors																															

● 有選項 Optional    ● 無選項 No options

馬達輸出 Motor Power (W)	750	
額定扭矩 Torque (Nm)	2.39	
螺桿等級 Ball Screw Level	C7 軋制 / C5 研磨 C7 Rolled Ball Screw / C5 Ground Ball Screw	
重複定位精度 Rep. Accuracy (mm)	±0.01 / ±0.005	
螺桿規格 Ball Screw Size (mm)	Ø20      20	
額定推力 Nominal Thrust (N)	400 (w)      510	
最高速度 Max. Speed (mm/s)	1250	
行程範圍 Stroke Range (mm)	Ø12      100...2000 / 100 間隔 Pitch	
最大負載值 Max. Load (Kg)	水平 Horizontal	100
	側掛 Sidehang	60
	垂直 Vertical	30

力和力矩 Force and torques	F <sub>y</sub> (N)	3100
	F <sub>z</sub> (N)	5200
	M <sub>x</sub> (N.m)	145
	M <sub>y</sub> (N.m)	450
面積二次矩 2nd moment of area	M <sub>z</sub> (N.m)	450
	L <sub>xx</sub> (cm <sup>2</sup> )	330
	L <sub>yy</sub> (cm <sup>2</sup> )	595
0mm行程基本重量 Basic Weight for 0mm Stroke (kg)		23
每100mm行程增加重量 Additional Weight per 100mm Stroke (kg)		2.4
磁簧開關 Proximity Sensor	CS1-M-1M 觸點式1米 1m Contact Type	
	CS1-MN-3M 無觸點NPN型3米 3m Contactless NPN Transistor	
	CS1-MP-3M 無觸點PNP型3米 3m Contactless PNP Transistor	

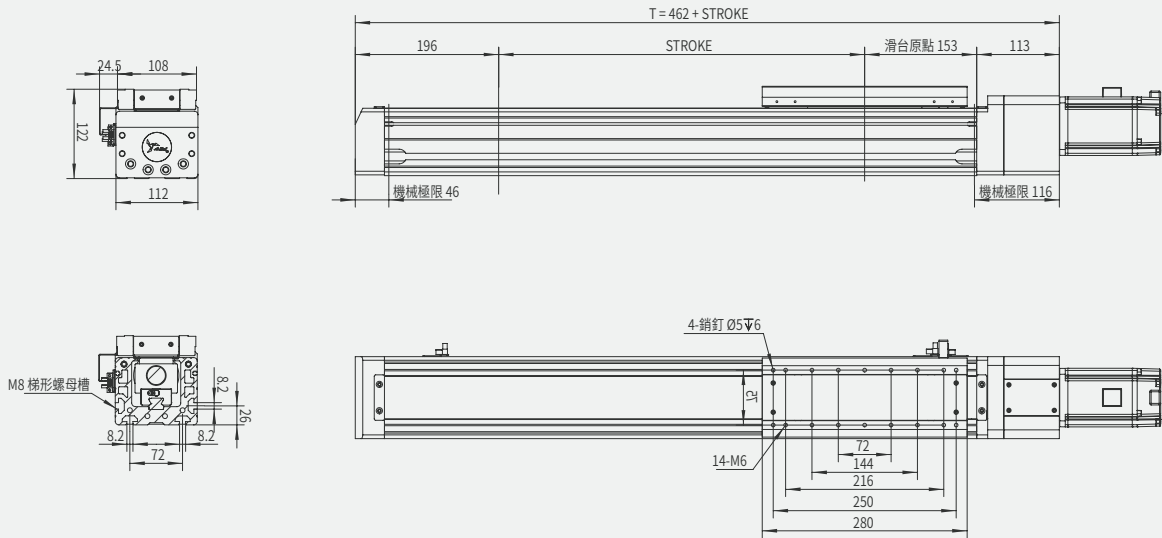


以上負載力矩曲線，客戶選用之負載需在我司產品最大負載範圍內 Above load torque curve, the loading should be within the maximum load range



AIMS112i-D 直接安裝 motor direct installed

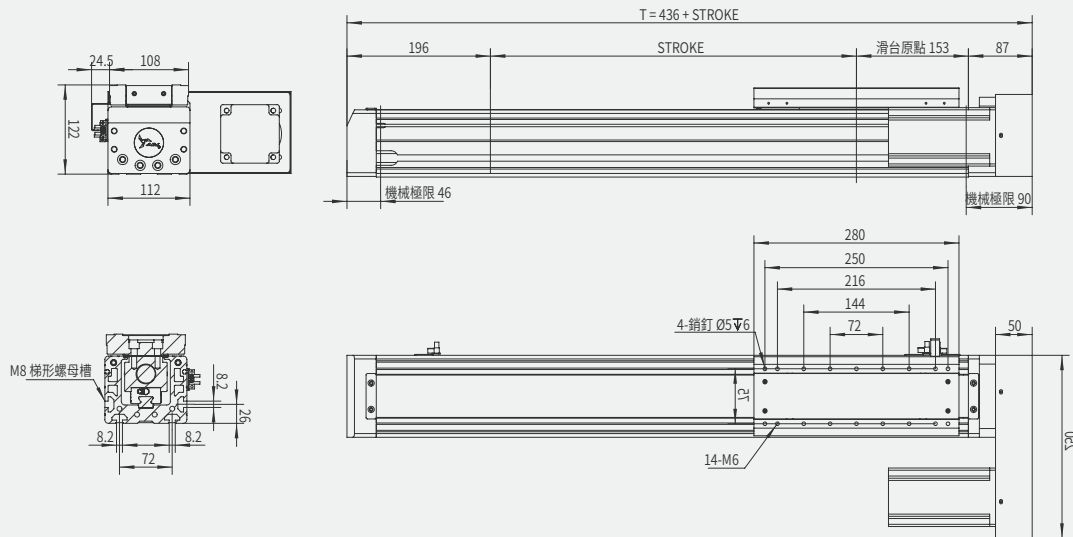
單位 Unit: mm



本圖面僅供參考用途，實際尺寸皆以實際提供之2D/3D圖紙為準 This drawing is for reference only. The actual dimensions are based on the actual 2D / 3D drawings provided.

AIMS112i-FP 前側間接安裝 motor frontside parallel installed

單位 Unit: mm



本圖面僅供參考用途，實際尺寸皆以實際提供之2D/3D圖紙為準 This drawing is for reference only. The actual dimensions are based on the actual 2D / 3D drawings provided.

- 日規電缸滑台  
Linear actuator
- 歐規電缸滑台  
EU linear actuator
- 超長型電缸滑台  
Super length linear actuator
- 活塞杆電動缸  
Cylinder actuator
- 旋轉台  
Rotary stage
- 精密對位平台  
Precision alignment stage
- 減速機  
Gear reducer
- 十字轉向器  
Bevel gearbox
- 螺桿導軌外置  
Spiral axes external guide
- 螺桿導軌內置  
Spiral axes internal guide
- 同步帶  
Toothed belt axes

S

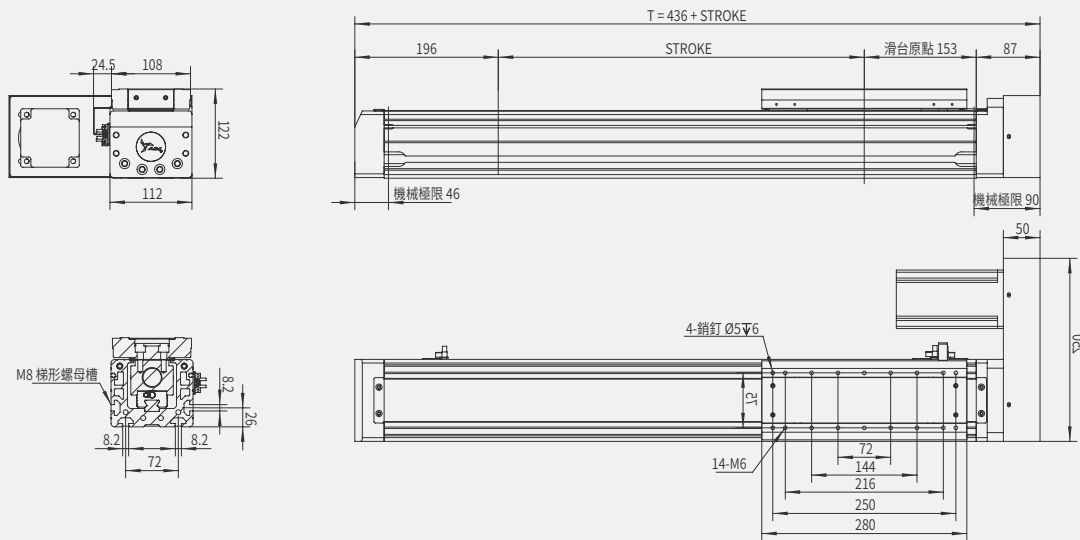
60i

80i

112i

AIMS112i-BP 後側間接安裝 motor backside parallel installed

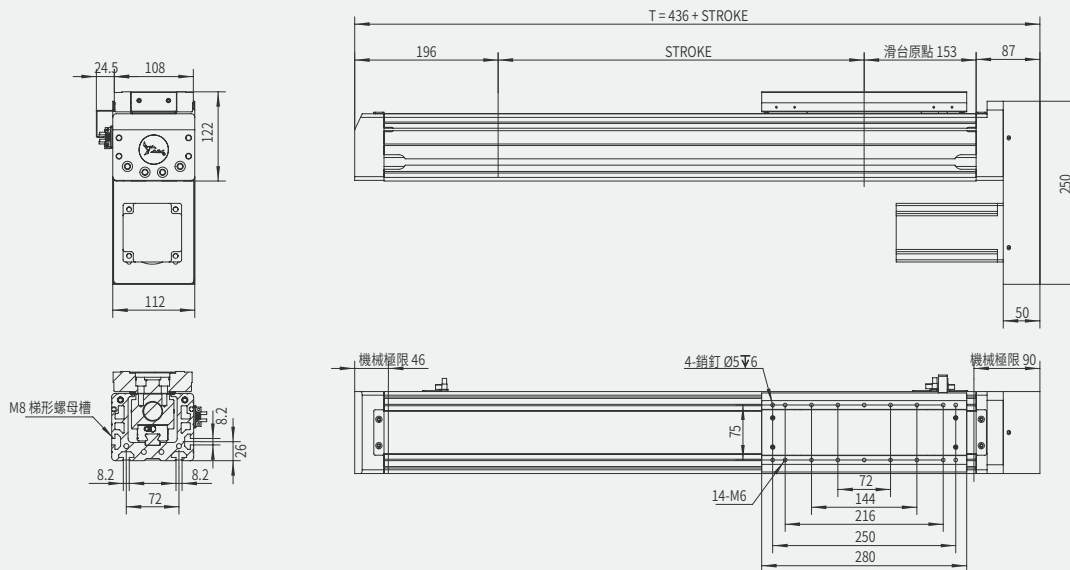
單位 Unit: mm



本圖面僅供參考用途，實際尺寸皆以實際提供之2D/3D圖紙為準 This drawing is for reference only. The actual dimensions are based on the actual 2D / 3D drawings provided.

AIMS112i-UP 馬達下側間接安裝 motor underneath parallel installed

單位 Unit: mm



本圖面僅供參考用途，實際尺寸皆以實際提供之2D/3D圖紙為準 This drawing is for reference only. The actual dimensions are based on the actual 2D / 3D drawings provided.

S

60i

80i

112i